

Cal Poly San Luis Obispo
Sources & Uses Budget - Summary
Fiscal Year 2014/15

	<u>FY 2013/14</u>	<u>Changes to Base - FY 14/15</u>	<u>FY 2014/15</u>
Sources			
State Tax Revenues	95,997,068	9,474,900	105,471,968
Campus Based Fees	154,328,000	9,901,000	164,229,000
Interest Assessment	169,900	(70,500)	99,400
Total Sources	<u><u>250,494,968</u></u>	<u><u>19,305,400</u></u>	<u><u>269,800,368</u></u>
Uses			
General Campus Support	179,996,469	-	179,996,469
Mandatory costs	19,536,044	9,223,300	28,759,344
Continuing Commitments	39,823,000	5,619,000	45,442,000
Future Commitments	-	6,286,965	6,286,965
Centrally Administered Budgets	11,139,455	-	11,139,455
Base Budget Structural Imbalance	-	(1,823,865)	(1,823,865)
Total Uses	<u><u>250,494,968</u></u>	<u><u>19,305,400</u></u>	<u><u>269,800,368</u></u>
Net Base Budget Available for Unmet Needs	<u><u>-</u></u>	<u><u>-</u></u>	<u><u>-</u></u>

Detail displayed on page 3

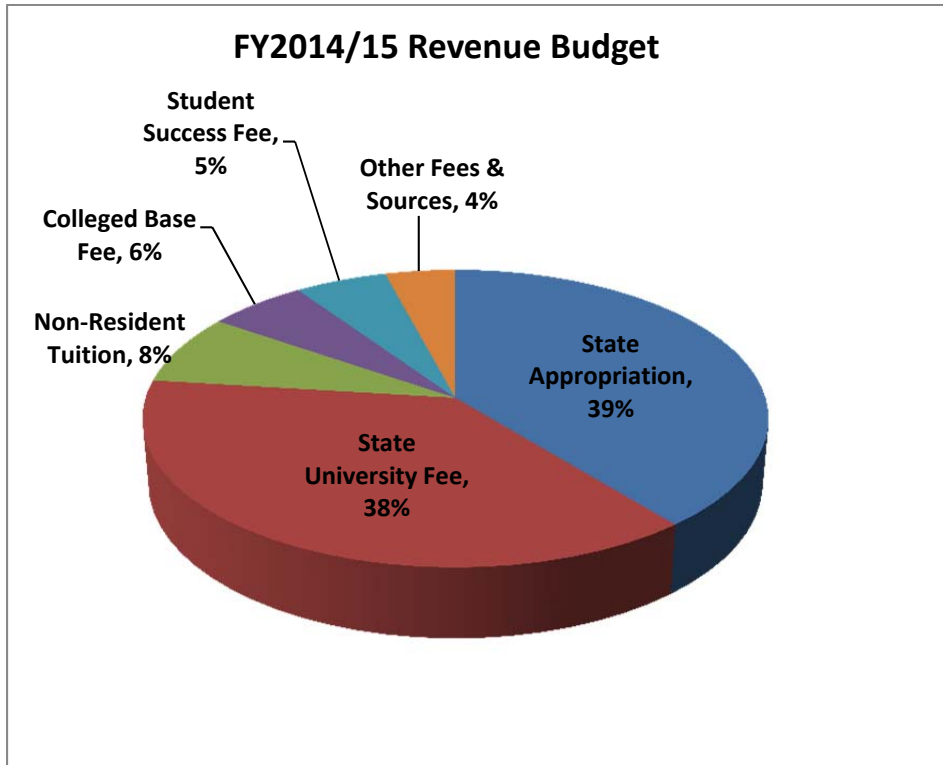
Cal Poly San Luis Obispo
Fiscal Year 2014/15
Initial CSU Operating Fund Base Budget After S&U Allocations

Academic Affairs	<u>FY 2013/14</u>	<u>Changes to Base - FY 14/15</u>	<u>FY 2014/15</u>
College of Agriculture	15,925,214		15,925,214
College of Architecture & Environmental Design	11,143,916		11,143,916
Orfalea College of Business	8,876,009		8,876,009
College of Engineering	19,478,019		19,478,019
College of Liberal Arts	24,597,827		24,597,827
College of Science & Math	23,876,624		23,876,624
Information Technology Services/Library	19,871,504		19,871,504
Financial Aid Grants	18,569,493	(549,600)	18,019,893
Cal Poly Plan	3,790,000	149,000	3,939,000
College Based Fee	15,202,000	571,000	15,773,000
Student Success Fee	11,200,000	3,454,000	14,654,000
All Other Program Areas	<u>19,757,739</u>	<u>3,782,848</u>	<u>23,540,587</u>
subtotal, Academic Affairs	\$192,288,345	\$7,407,248	\$199,695,593
Administration and Finance			
Utilities	7,067,287		7,067,287
Special Repair	2,029,451		2,029,451
All Other AFD Areas	<u>26,341,694</u>	<u>291,120</u>	<u>26,632,814</u>
subtotal, Administration and Finance	35,438,432	291,120	35,729,552
President's Office and Legal Counsel	2,156,027	60,000	2,216,027
Student Affairs	10,304,828	298,500	10,603,328
University Advancement	2,899,187	2,193,997	5,093,184
Centrally Managed - Risk, Fire Services	3,800,198	44,000	3,844,198
Campus Contingency & Unallocated	<u>3,607,951</u>	<u>9,010,535</u>	<u>12,618,486</u>
CSU Operating Fund Base Budget	\$250,494,968	\$19,305,400	\$269,800,368
deduct: CSU Operating Fund Fee Revenues	<u>154,497,900</u>	<u>9,830,500</u>	<u>164,328,400</u>
Net, CSU Allocation of State Tax Revenues	\$95,997,068	\$ 9,474,900	\$105,471,968

Cal Poly San Luis Obispo
Fiscal Year 2014/15
Sources & Uses Changes to Base

Resident FTE: 16,403

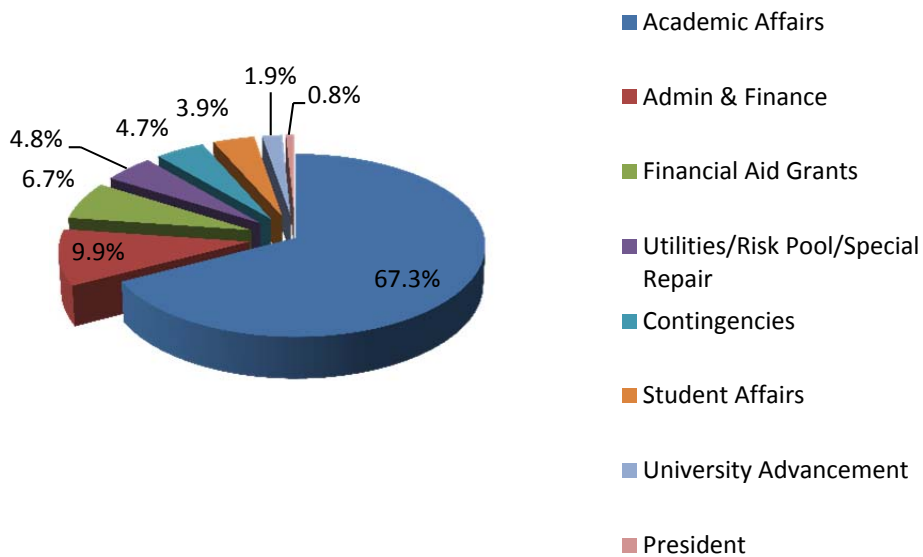
1	Sources			
2	CSU Changes to Base	<u>FY 2013/14</u>	<u>FY 2014/15</u>	
3	Allocated State Tax Revenues	95,997,068	7,740,900	
4	Enrollment Growth		1,734,000	
5	Total, CSU Revenue Increase		9,474,900	
6	<i>Cal Poly Plan:</i> Academic Fee Revenue	3,868,000	149,000	
7	State University Fee	99,340,000	2,698,000	
8	Professional Grad Fee	170,000	0	
9	Non-Resident Tuition ¹	17,744,000	2,822,000	
10	College Based Fee	15,202,000	571,000	
11	Health Services	5,351,000	207,000	
12	Student Success Fee	11,200,000	3,454,000	
13	Other Campus Receipts and Sources	<u>1,453,000</u>	<u>0</u>	
14	Total, Campus Revenue Adjustment	<u>154,328,000</u>	<u>9,901,000</u>	
15	Total, 2012-2013 Cal Poly Base Sources	250,325,068	19,375,900	
16	Cal Poly Unscheduled Base			
17	Interest Assessment	169,900	(70,500)	
18	Total Sources	<u>250,494,968</u>	<u>19,305,400</u>	
19	Uses, CSU or Legislative Mandates			
20	General Campus Support	179,996,469		
21	Employee Compensation Increase	2,137,746	7,498,000	
22	Physical Plant Maintenance - (Maintenance Infrastructure)		-	
23	Employee Retirement		862,800	
24	Faculty Equity Funding Perm		80,100	
25	CSU enrollment demand		-	
26	CSU Student Success Efforts - FY 13/14 Perm		675,000	
27	CSU Student Success Efforts - FY 14/15		-	
28	Health (Mandatory Costs)		657,000	
29	Risk Pool	3,567,198	-	
30	SUG Allocation	<u>13,831,100</u>	<u>-549,600</u>	
31	Total, CSU Mandated Uses	199,532,513	9,223,300	
32	Uses, Cal Poly Allocations			
33	Reaffirm Continuing Commitments			
34	Cal Poly Plan (Academic Fee revenues)	3,868,000	149,000	
35	Professional Grad Fee - Fin Aid 25%	43,614	0	
36	Professional Grad Fee - OCOB	126,386	0	
37	Health Services	5,351,000	207,000	
38	Student Success Fee	11,200,000	3,454,000	
39	College Based Fee	<u>15,202,000</u>	<u>571,000</u>	
40	Sub-Total, Designated Campus Based Fees	35,791,000	4,381,000	
41	Campus Funded Scholarships			
42	Non-Resident Scholarship (725 FTF)	3,850,000	730,000	
43	Cal Poly N/R Scholars (14/15 Cohorts)	0	90,000	
44	CP Scholars Eng Only (cohort 12/13,13/14,14/15)	132,000	246,000	
45	Merit Scholarship (cohort 13/14, 14/15)	<u>50,000</u>	<u>172,000</u>	
46	Sub-Total, Campus Based Scholarships	4,032,000	1,238,000	
47	Future Commitments			
48	Admissions support		135,000	
49	Fire Contract (5 yrs w/ 3% annual inflation factor)		44,000	
50	Coaches salary increases		60,000	
51	Mustang Mascots		25,000	
52	CODVP Approved Base Budget Augmentations		<u>6,022,965</u>	
53	Sub-Total, Future Commitments		6,286,965	
54	Centrally Administered Budgets			
55	Campus Contingencies(comp, risk, general, etc)	4,010,068	0	
56	Utilities	<u>7,129,387</u>	<u>0</u>	
57	Total, Centrally Administered Budgets	11,139,455	0	
58	Total Uses	<u>250,494,968</u>	<u>21,129,265</u>	
59	Net Base Budget Available for 2013/14 Unmet Needs	0		
60	ESTIMATED Base Budget Available for 2014/15 Unmet Needs		-1,823,865	



Overall, student fees provide approximately 61% of Cal Poly's operating budget compared to 39% of state support. To provide perspective, a little over ten years ago the state provided 80% of funding with the balance provided by student fees

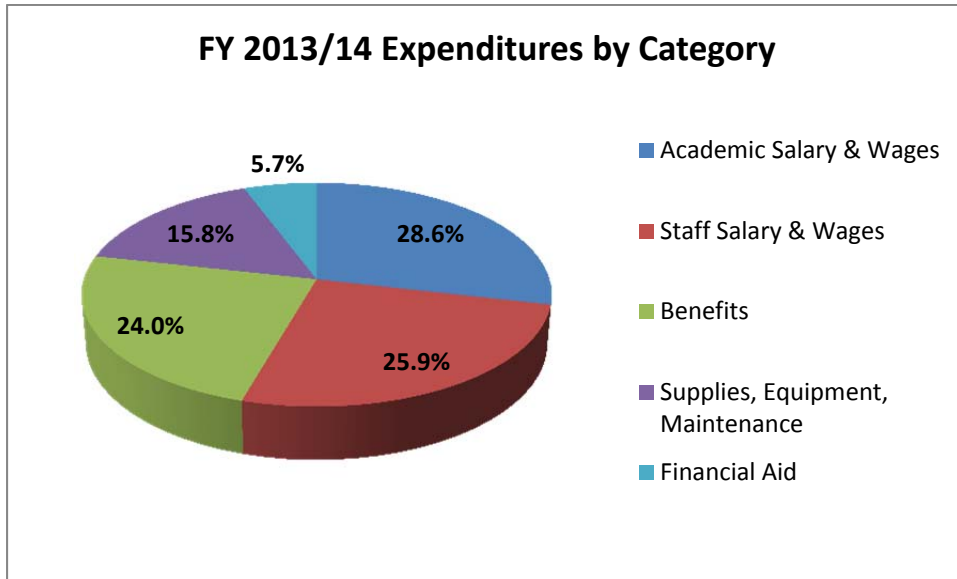
State Appropriation	39%
State University Fee	38%
Non-Resident Tuition	8%
College Base Fee	6%
Student Success Fee	5%
Other Fees & Sources	4%

FY 2014/15 Operating Budget



74% of Cal Poly's operating budget is allocated to Academic Affairs. Of that, approximately 57% is allocated to the six colleges with the balance allocated to Library Services, Information Technology (ITS) and other programs within the division.

Academic Affairs	67.3%
Admin & Finance	9.9%
Financial Aid Grants	6.7%
Utilities/Risk/Special Repair	4.8%
Contingencies	4.7%
Student Affairs	3.9%
University Advancement	1.9%
President	0.8%



Similar to other higher education institutions, most of Cal Poly's operating budget goes to pay for people. Approximately 79% is used to fund faculty & staff wages and benefits. Operating expenses do not reflect capital expenditures or debt service.

Academic Salary & Wages	28.6%
Staff Salary & Wages	25.9%
Benefits	24.0%
Supplies, Equipment, Maintenance	15.8%
Financial Aid	5.7%