

**CAL POLY**

Faculty Offices East

Floor 1  
Space Data [http://afd.calpoly.edu/facilities/spacefacility/space\\_data.asp](http://afd.calpoly.edu/facilities/spacefacility/space_data.asp)

FACILITIES MANAGEMENT AND DEVELOPMENT

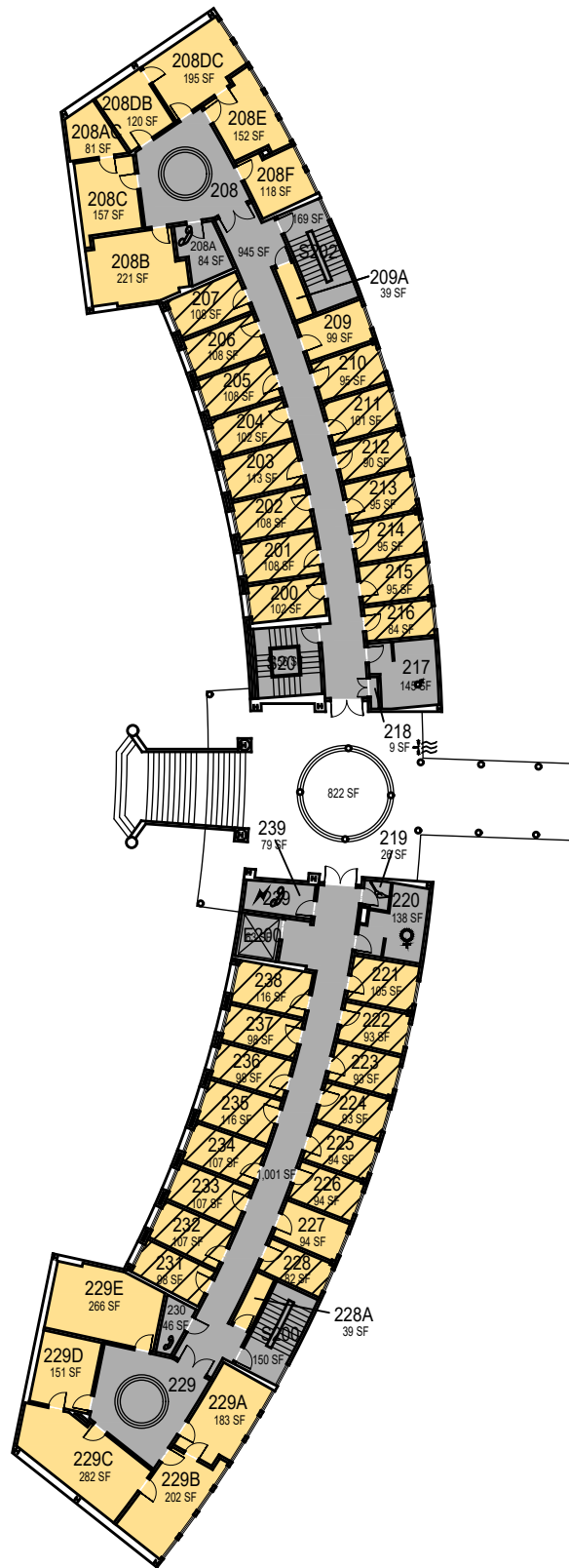
|                   |                |                     |                     |
|-------------------|----------------|---------------------|---------------------|
| 00000<br>UNASSIGN | 107500<br>OCOB | 120000<br>ACAD AFRS | 137500<br>UNIV DEV  |
| 102500<br>CAFES   | 110000<br>CLA  | 120400<br>ITS       | 140000<br>STUD AFRS |
| 105000<br>CAED    | 112500<br>CENG | 121300<br>DIV/INCL  | 145000<br>PRESIDENT |
| 117500<br>CSM     | 125000<br>AFD  | 150000<br>UNIV SUP  |                     |

College/Division

October 2020



1"=35'



# Faculty Offices East

Floor 2  
Space Data [http://afd.calpoly.edu/facilities/spacefacility/space\\_data.asp](http://afd.calpoly.edu/facilities/spacefacility/space_data.asp)

FACILITIES MANAGEMENT AND DEVELOPMENT

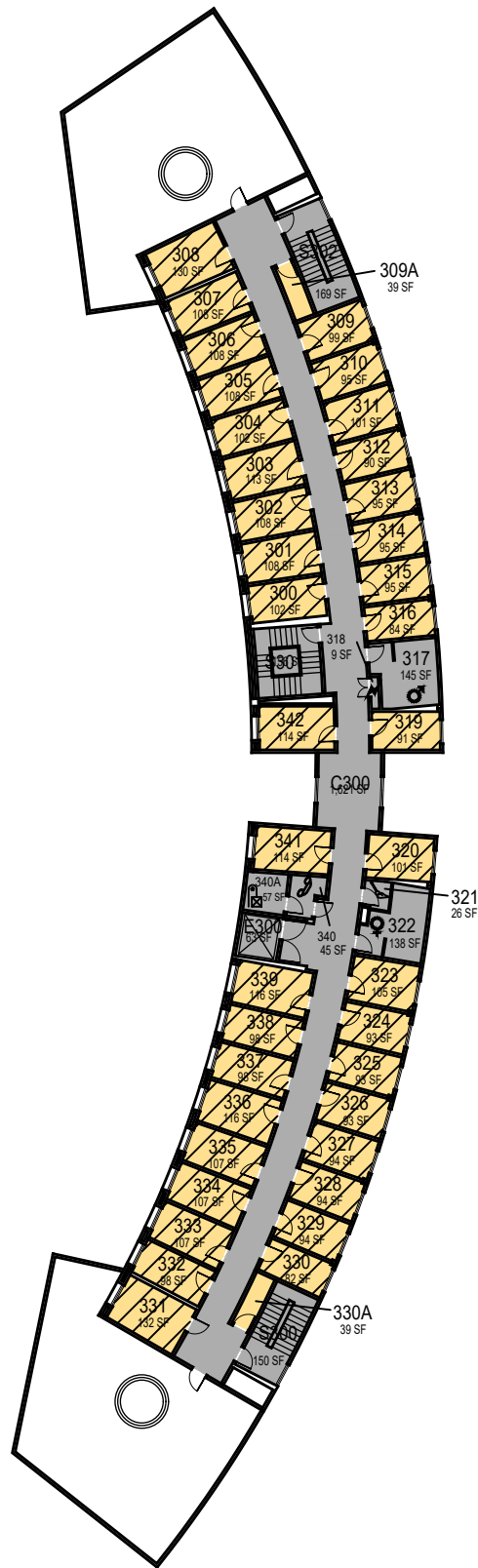
|                   |                |                     |                     |
|-------------------|----------------|---------------------|---------------------|
| 00000<br>UNASSIGN | 107500<br>OCOB | 120000<br>ACAD AFRS | 137500<br>UNIV DEV  |
| 102500<br>CAFES   | 110000<br>CLA  | 120400<br>ITS       | 140000<br>STUD AFRS |
| 105000<br>CAED    | 112500<br>CENG | 121300<br>DIV/INCL  | 145000<br>PRESIDENT |
|                   | 117500<br>CSM  | 125000<br>AFD       | 150000<br>UNIV SUP  |

College/Division

October 2020



1"=35'



# Faculty Offices East

Floor 3  
Space Data [http://afd.calpoly.edu/facilities/spacefacility/space\\_data.asp](http://afd.calpoly.edu/facilities/spacefacility/space_data.asp)

FACILITIES MANAGEMENT AND DEVELOPMENT

|                   |                |                     |                     |
|-------------------|----------------|---------------------|---------------------|
| 00000<br>UNASSIGN | 107500<br>OCOB | 120000<br>ACAD AFRS | 137500<br>UNIV DEV  |
| 102500<br>CAFES   | 110000<br>CLA  | 120400<br>ITS       | 140000<br>STUD AFRS |
| 105000<br>CAED    | 112500<br>CENG | 121300<br>DIV/INCL  | 145000<br>PRESIDENT |
|                   | 117500<br>CSM  | 125000<br>AFD       | 150000<br>UNIV SUP  |

College/Division

October 2020



1"=35'