

**032-A Floor 1  
Pavilion**



**CAL POLY**

**Oppenheimer Family Equine  
Center**

032-A Pavilion

Space Data [http://afd.calpoly.edu/facilities/spacefacility/space\\_data.asp](http://afd.calpoly.edu/facilities/spacefacility/space_data.asp)

FACILITIES MANAGEMENT AND DEVELOPMENT

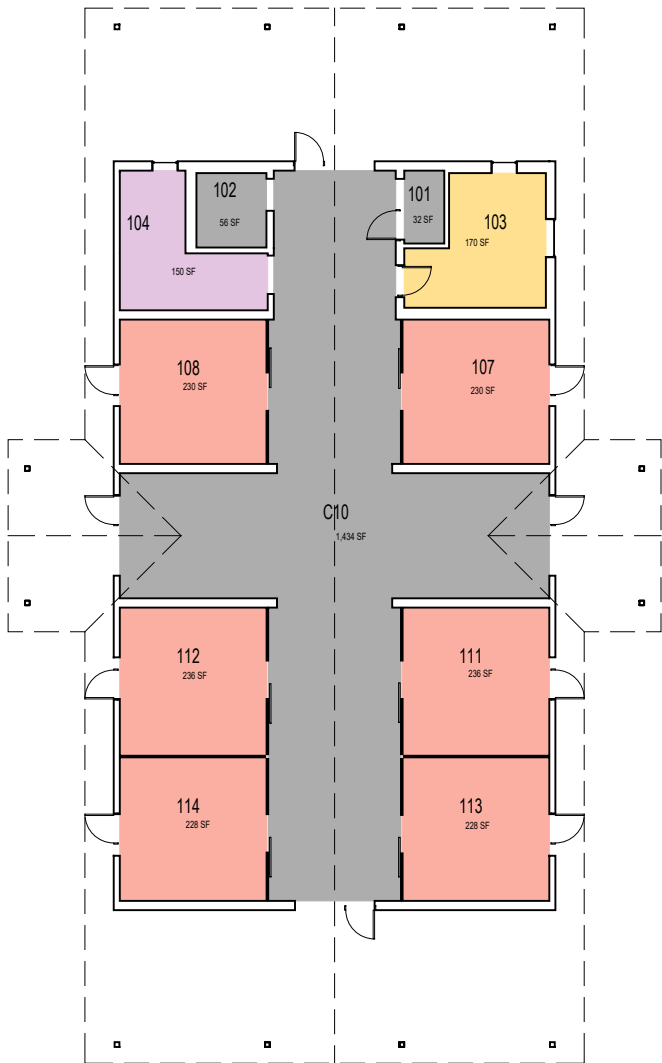
000 UNASSIGN	400 STUDY	800 HEALTH
100 CLASS	500 SPECIAL	900 RESIDENTIAL
200 LAB	600 GENERAL	
300 OFFICE	700 SUPPORT	

Room Use

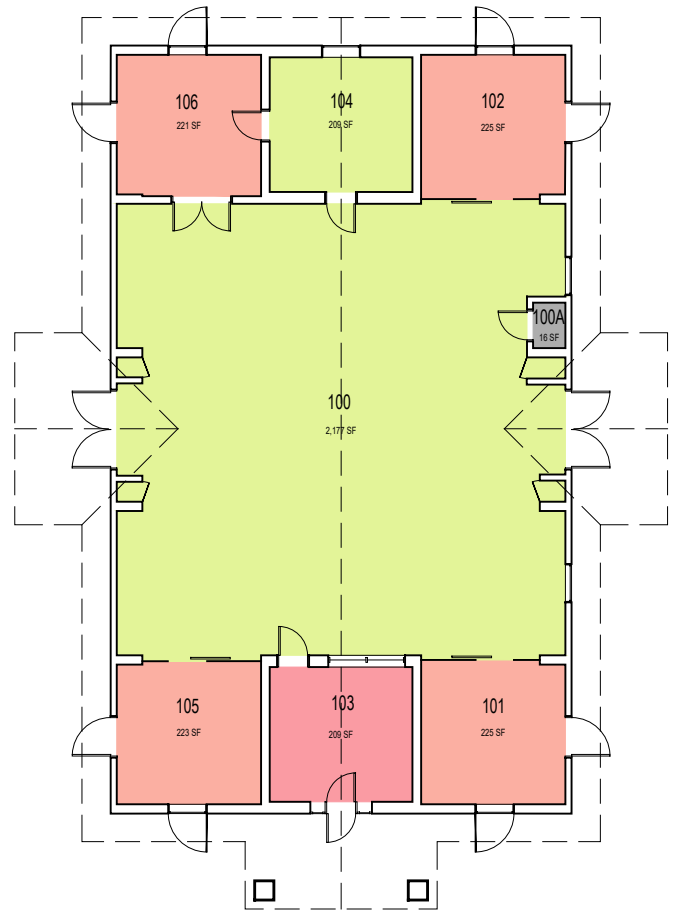
October 2020



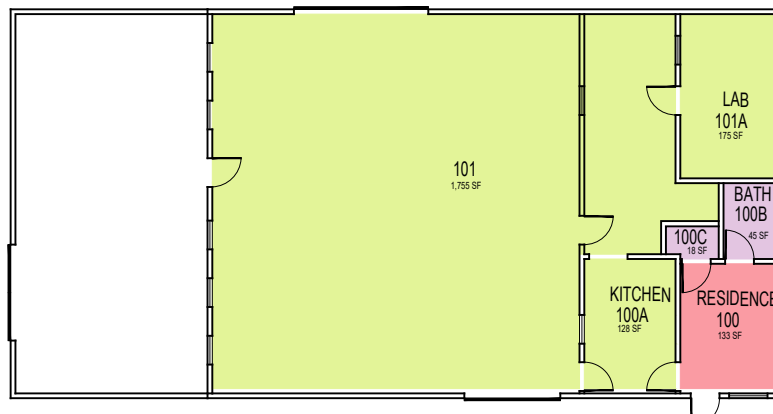
1:50



**032-D Floor 1  
Foaling Barn**



**032-M Floor 1  
Stallion Barn**



**032-C Floor 1  
Breeding Barn**



**CAL POLY**

**Oppenheimer Family Equine  
Center**

032-C Breeding & 032-D Fouling Barns  
Space Data [http://afd.calpoly.edu/facilities/spacefacility/space\\_data.asp](http://afd.calpoly.edu/facilities/spacefacility/space_data.asp)

FACILITIES MANAGEMENT AND DEVELOPMENT

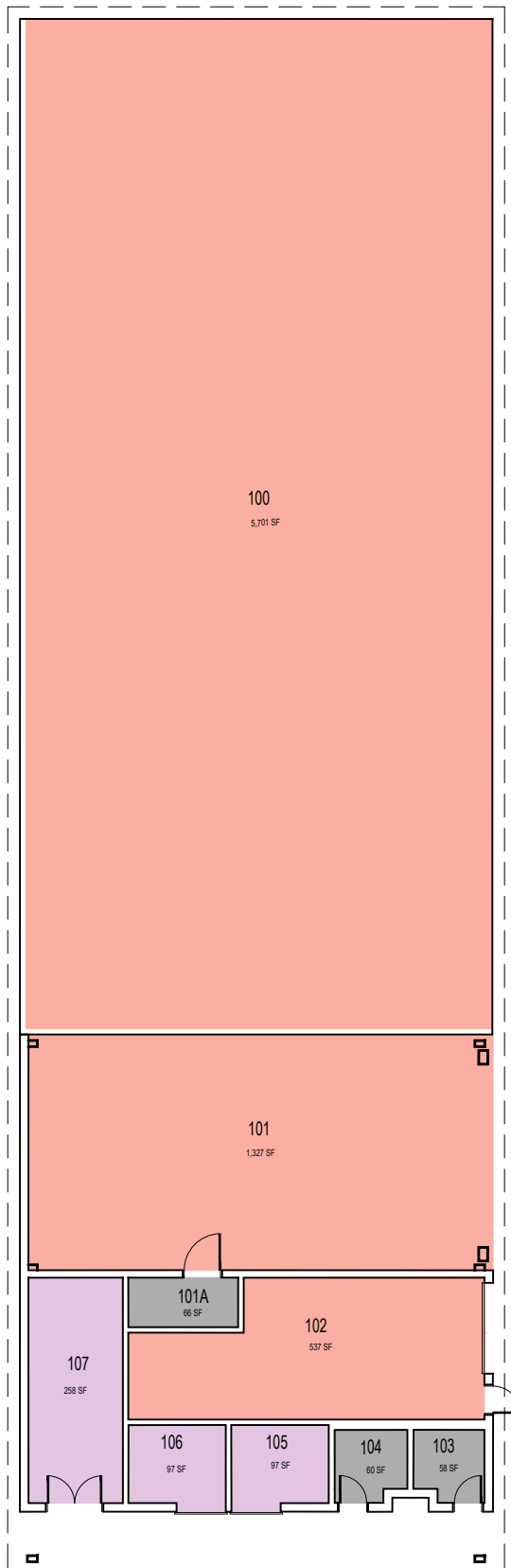
000 UNASSIGN	400 STUDY	800 HEALTH
100 CLASS	500 SPECIAL	900 RESIDENTIAL
200 LAB	600 GENERAL	
300 OFFICE	700 SUPPORT	

Room Use

October 2020



1:20



**032-H Floor 1  
Hay Barn**



**CAL POLY**

**Oppenheimer Family Equine  
Center**

032-H Hay Barn

Space Data [http://afd.calpoly.edu/facilities/spacefacility/space\\_data.asp](http://afd.calpoly.edu/facilities/spacefacility/space_data.asp)

FACILITIES MANAGEMENT AND DEVELOPMENT

000 UNASSIGN	400 STUDY	800 HEALTH
100 CLASS	500 SPECIAL	900 RESIDENTIAL
200 LAB	600 GENERAL	
300 OFFICE	700 SUPPORT	

Room Use

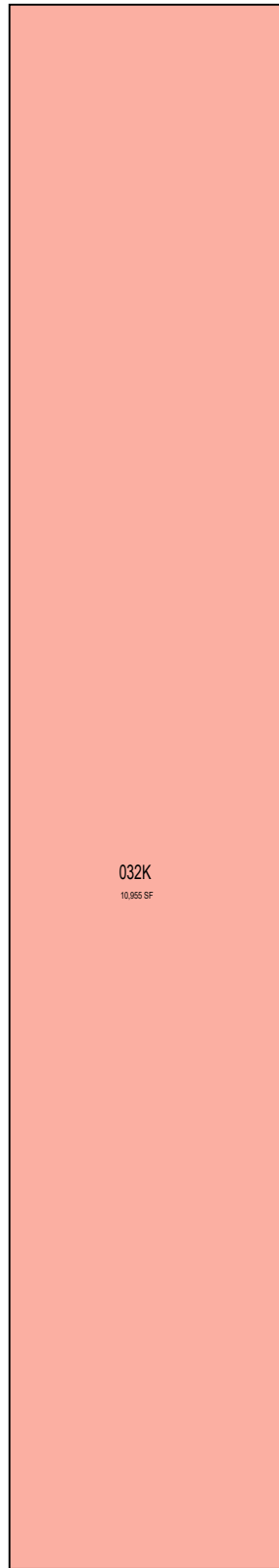
October 2020



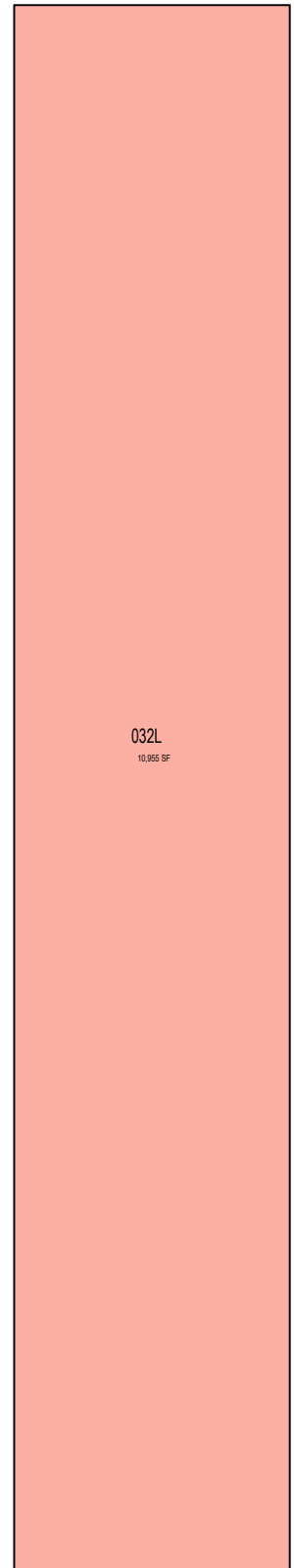
1:20



**032-J Floor 1  
Mare Barn**



**032-K Floor 1  
Barn Northwest**



**032-L Floor 1  
Barn Northeast**



**CAL POLY**

**Oppenheimer Family Equine  
Center**

032J Mare Barn

Space Data [http://afd.calpoly.edu/facilities/spacefacility/space\\_data.asp](http://afd.calpoly.edu/facilities/spacefacility/space_data.asp)

FACILITIES MANAGEMENT AND DEVELOPMENT

000 UNASSIGN	400 STUDY	800 HEALTH
100 CLASS	500 SPECIAL	900 RESIDENTIAL
200 LAB	600 GENERAL	
300 OFFICE	700 SUPPORT	

Room Use

October 2020



1:30