

**CAL POLY**

Faculty Offices North

Level 1  
Space Data [http://afd.calpoly.edu/facilities/spacefacility/space\\_data.asp](http://afd.calpoly.edu/facilities/spacefacility/space_data.asp)

FACILITIES MANAGEMENT AND DEVELOPMENT

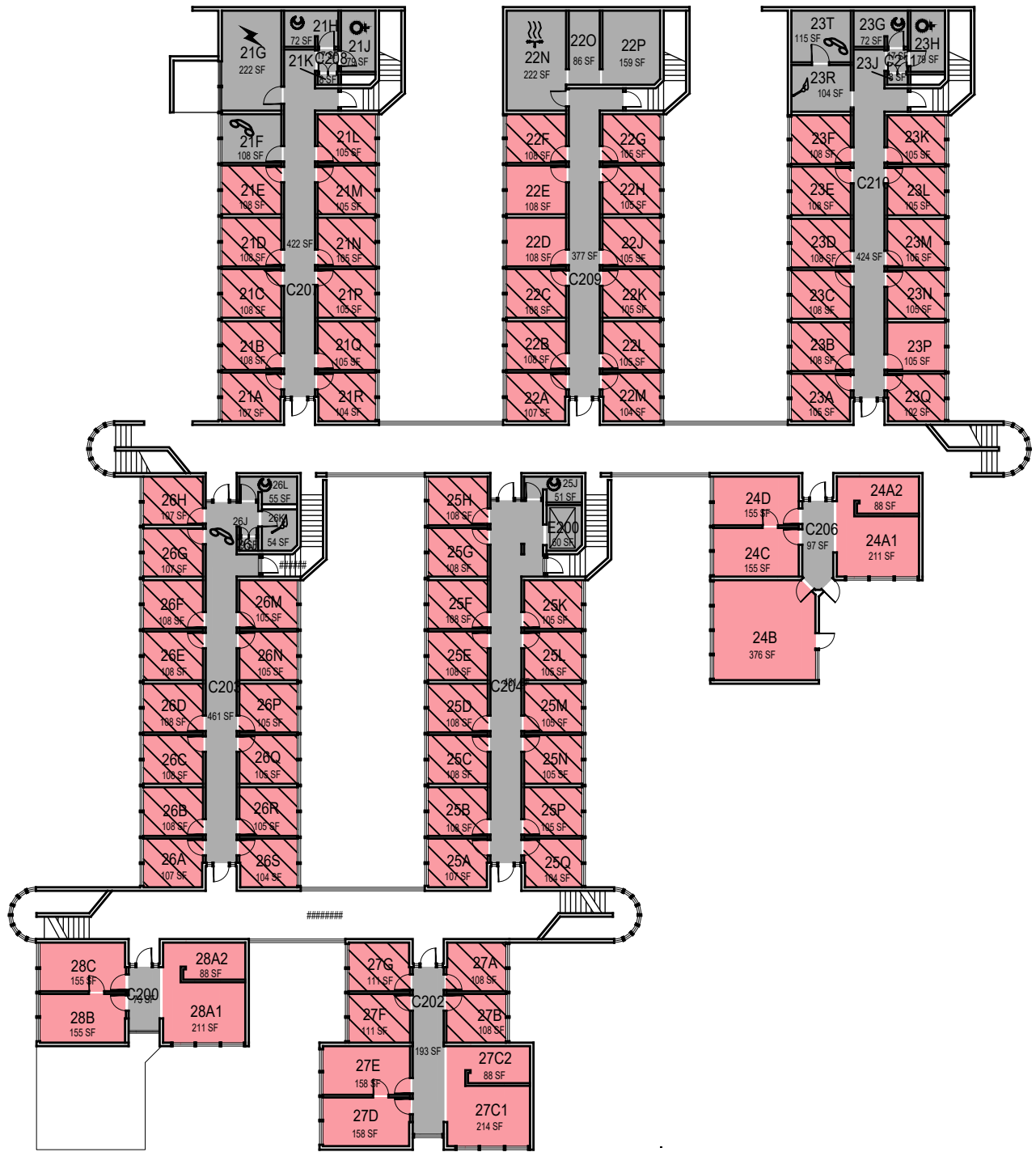
|              |             |                 |
|--------------|-------------|-----------------|
| 000 UNASSIGN | 400 STUDY   | 800 HEALTH      |
| 100 CLASS    | 500 SPECIAL | 900 RESIDENTIAL |
| 200 LAB      | 600 GENERAL |                 |
| 300 OFFICE   | 700 SUPPORT |                 |

Room Use

October 2020



1"=30'



**CAL POLY**

Faculty Offices North

Level 2  
Space Data [http://afd.calpoly.edu/facilities/spacefacility/space\\_data.asp](http://afd.calpoly.edu/facilities/spacefacility/space_data.asp)

FACILITIES MANAGEMENT AND DEVELOPMENT

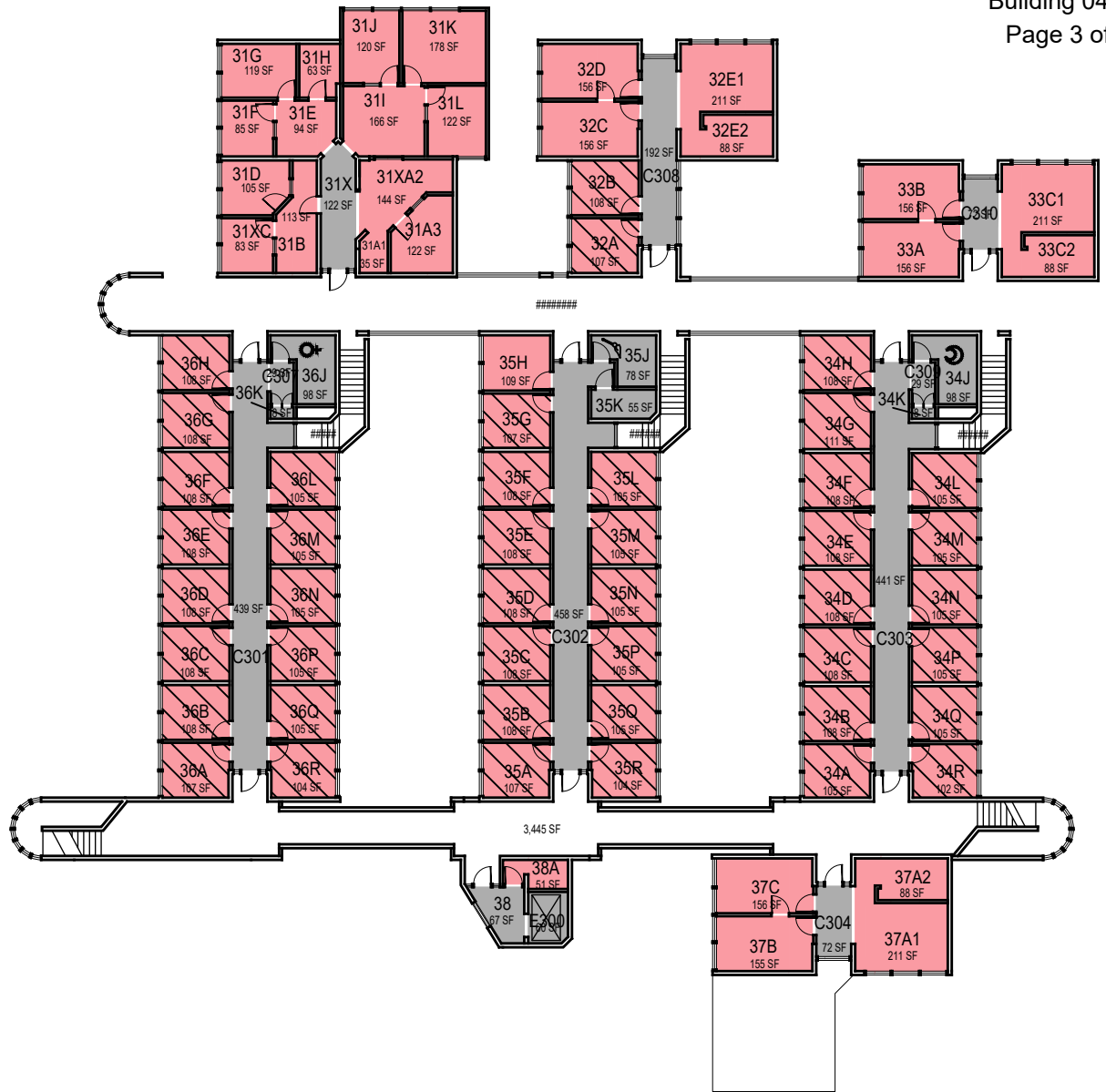
|              |             |                 |
|--------------|-------------|-----------------|
| 000 UNASSIGN | 400 STUDY   | 800 HEALTH      |
| 100 CLASS    | 500 SPECIAL | 900 RESIDENTIAL |
| 200 LAB      | 600 GENERAL |                 |
| 300 OFFICE   | 700 SUPPORT |                 |

October 2020



1"=30'

Room Use



**CAL POLY**

Faculty Offices North

Level 3

Space Data [http://afd.calpoly.edu/facilities/spacefacility/space\\_data.asp](http://afd.calpoly.edu/facilities/spacefacility/space_data.asp)

FACILITIES MANAGEMENT AND DEVELOPMENT

|              |             |                 |
|--------------|-------------|-----------------|
| 000 UNASSIGN | 400 STUDY   | 800 HEALTH      |
| 100 CLASS    | 500 SPECIAL | 900 RESIDENTIAL |
| 200 LAB      | 600 GENERAL |                 |
| 300 OFFICE   | 700 SUPPORT |                 |

October 2020



1"=30'

Room Use