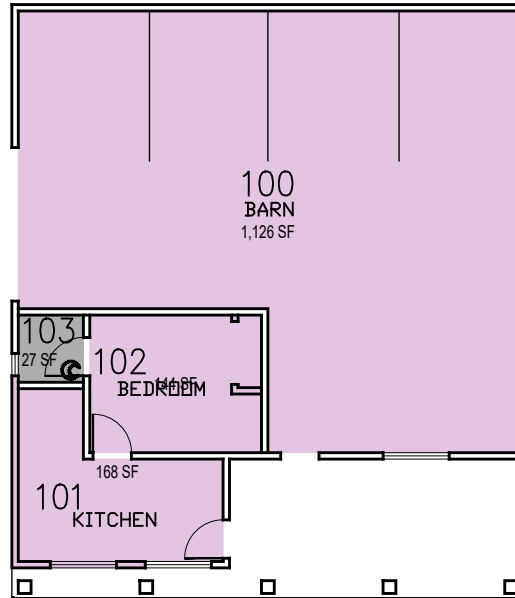
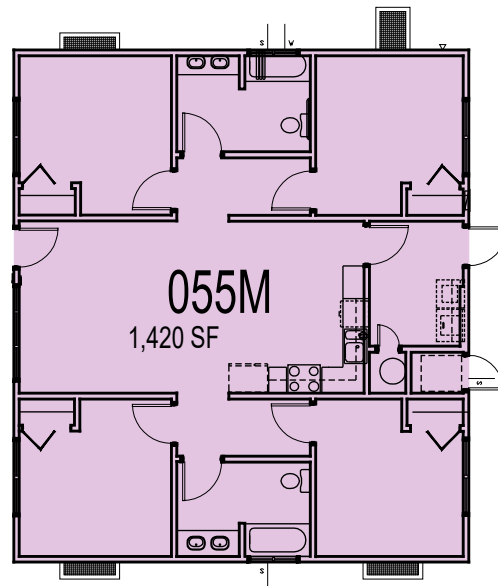


Beef Cattle Evaluation Center
Residence 055-A



Beef Cattle Evaluation Center
Modular Residence 055-M



Beef Cattle Evaluation Center
Office 055-B



Beef Cattle Evaluation Center

55-Multiple

FACILITIES MANAGEMENT AND DEVELOPMENT

| | | | | |
|----------------|-------------|------------------|------------------|-----------------|
| 00000 UNASSIGN | 107500 OCOB | 120000 ACAD AFRS | 137500 UNIV DEV | 120600 RESEARCH |
| 102500 CAFES | 110000 CLA | 120400 ITS | 140000 STUD AFRS | 120800 ENROLL |
| 105000 CAED | 112500 CENG | 121300 DIV/INCL | 145000 PRESIDENT | 130000 PERSON |
| 117500 CSM | 125000 AFD | 150000 UNIV SUP | 160000 COM&MARK | |

March 2022



1"=15"