

**CAL POLY**

Santa Lucia Hall

Floor 1  
Space Data [http://afd.calpoly.edu/facilities/spacefacility/space\\_data.asp](http://afd.calpoly.edu/facilities/spacefacility/space_data.asp)

FACILITIES MANAGEMENT AND DEVELOPMENT

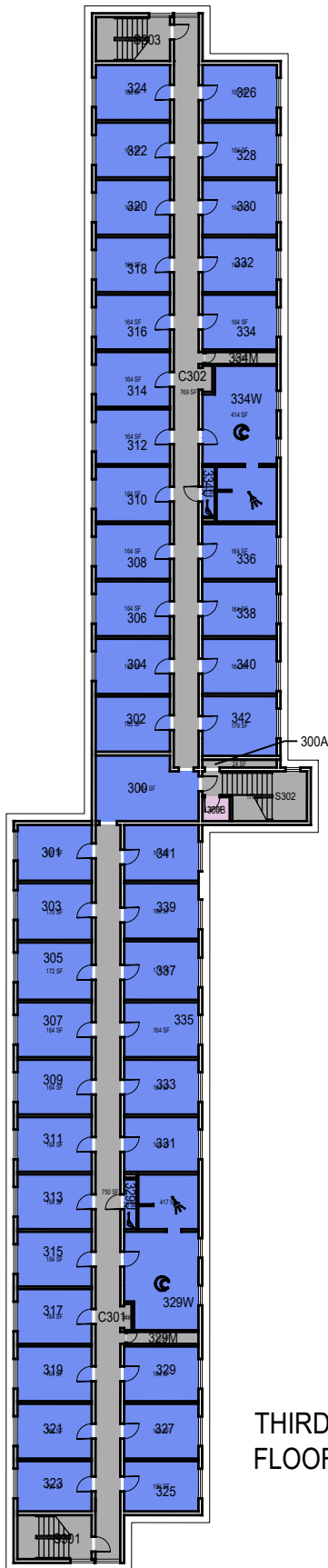
000 UNASSIGN	400 STUDY	800 HEALTH
100 CLASS	500 SPECIAL	900 RESIDENTIAL
200 LAB	600 GENERAL	
300 OFFICE	700 SUPPORT	

October 2020

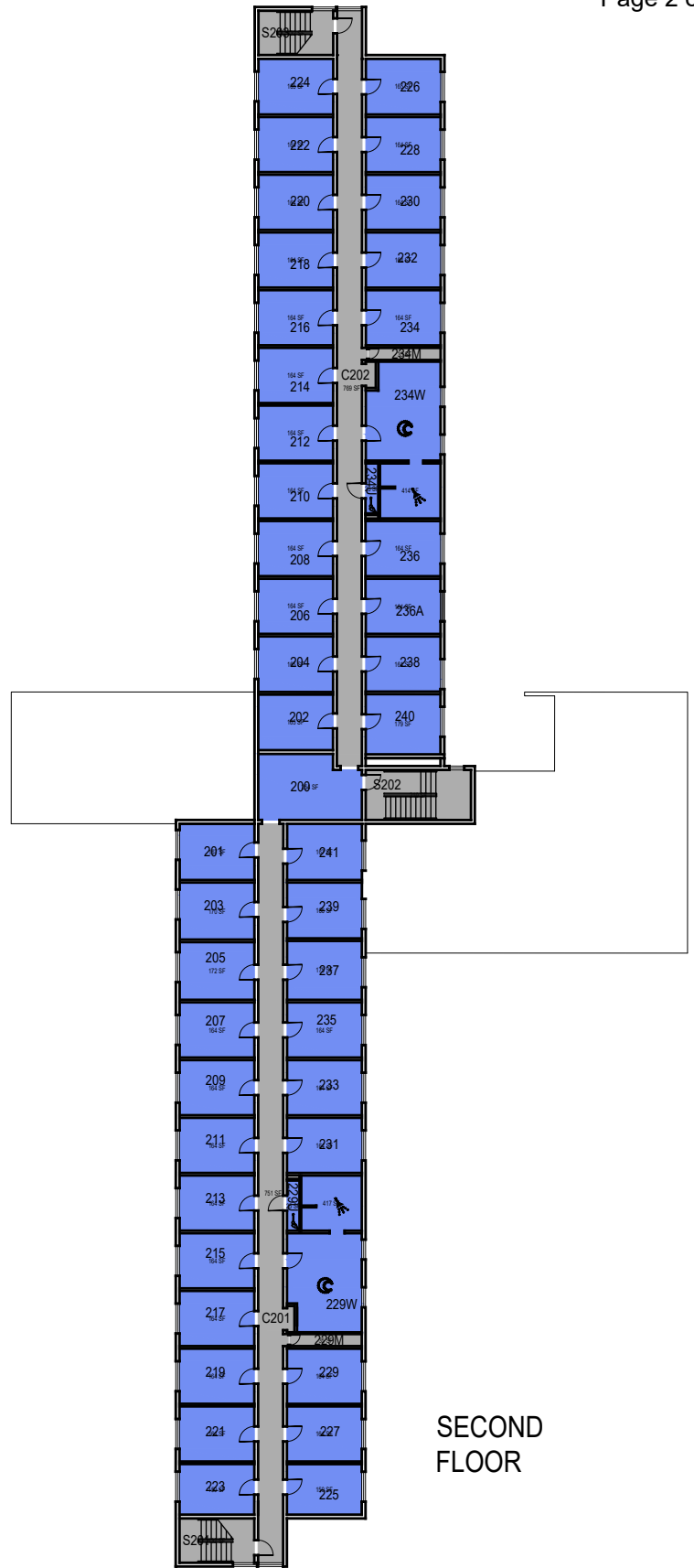


1"=35'

Room Use



THIRD FLOOR



SECOND FLOOR



**CAL POLY**

Santa Lucia Hall

Floors 2 and 3

Space Data [http://afd.calpoly.edu/facilities/spacefacility/space\\_data.asp](http://afd.calpoly.edu/facilities/spacefacility/space_data.asp)

FACILITIES MANAGEMENT AND DEVELOPMENT

000 UNASSIGN	400 STUDY	800 HEALTH
100 CLASS	500 SPECIAL	900 RESIDENTIAL
200 LAB	600 GENERAL	
300 OFFICE	700 SUPPORT	

October 2020



1"=35'

Room Use