

Fremont Hall



CAL POLY

Floor 1
Space Data http://afd.calpoly.edu/facilities/spacefacility/space_data.asp

FACILITIES MANAGEMENT AND DEVELOPMENT

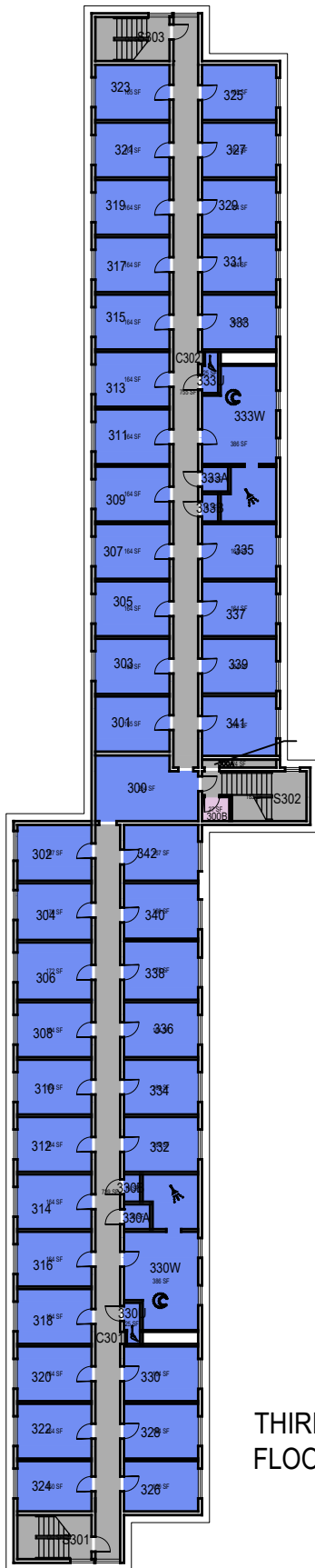
000 UNASSIGN	400 STUDY	800 HEALTH
100 CLASS	500 SPECIAL	900 RESIDENTIAL
200 LAB	600 GENERAL	
300 OFFICE	700 SUPPORT	

Room Use

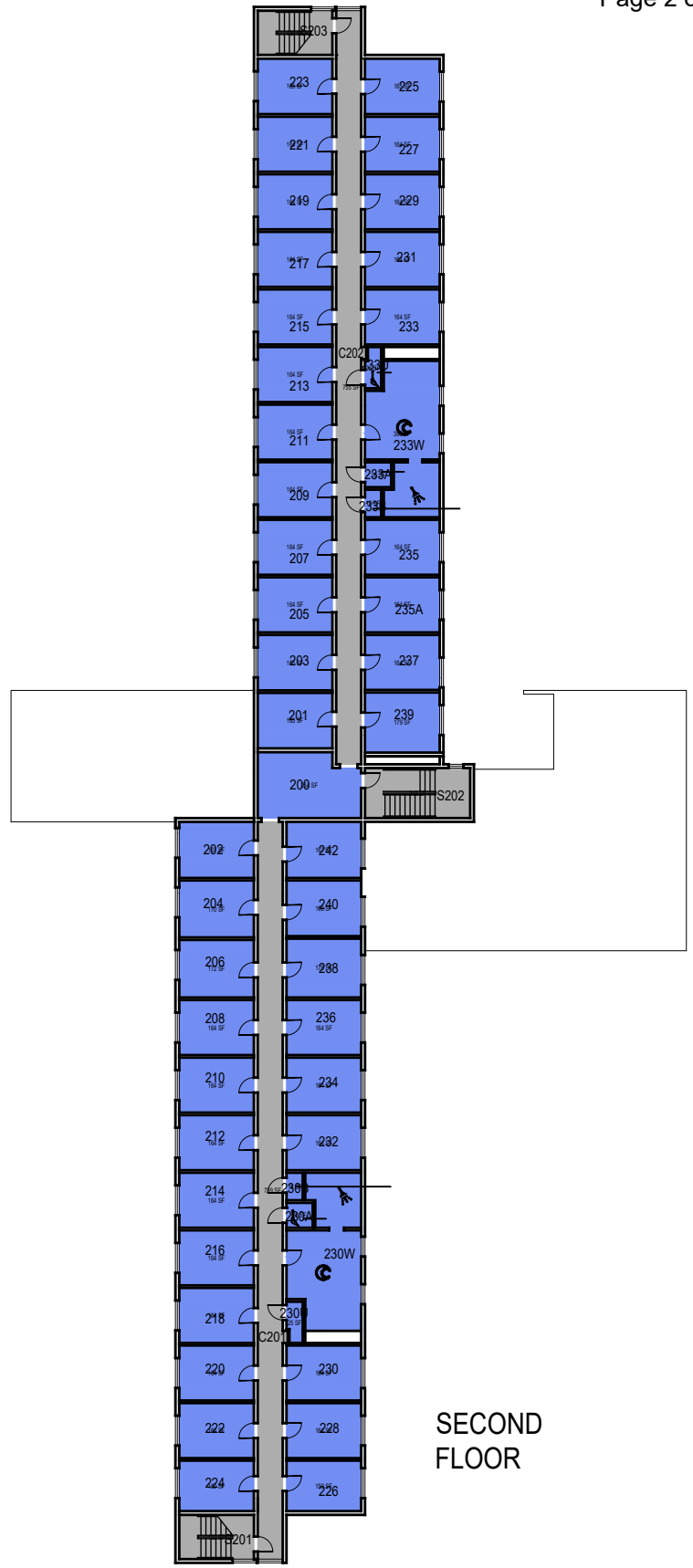
October 2020



1"=35'



THIRD FLOOR



SECOND FLOOR



CAL POLY

Fremont Hall

Floors 2 and 3

Space Data http://afd.calpoly.edu/facilities/spacefacility/space_data.asp

FACILITIES MANAGEMENT AND DEVELOPMENT

000 UNASSIGN	400 STUDY	800 HEALTH
100 CLASS	500 SPECIAL	900 RESIDENTIAL
200 LAB	600 GENERAL	
300 OFFICE	700 SUPPORT	

Room Use

October 2020



1"=35'