

October 2020



**CAL POLY**

Dover

Poly Canyon Village

Floor 1

Space Data [http://afd.calpoly.edu/facilities/spacefacility/space\\_data.asp](http://afd.calpoly.edu/facilities/spacefacility/space_data.asp)

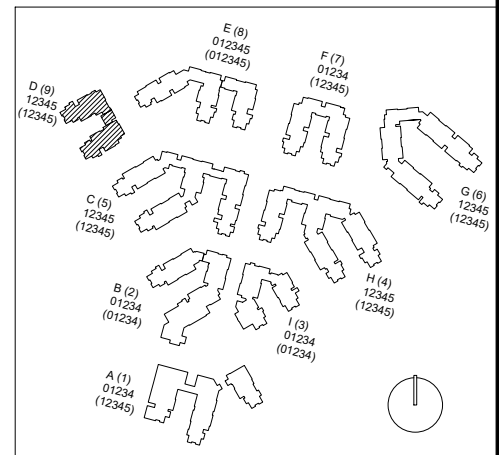
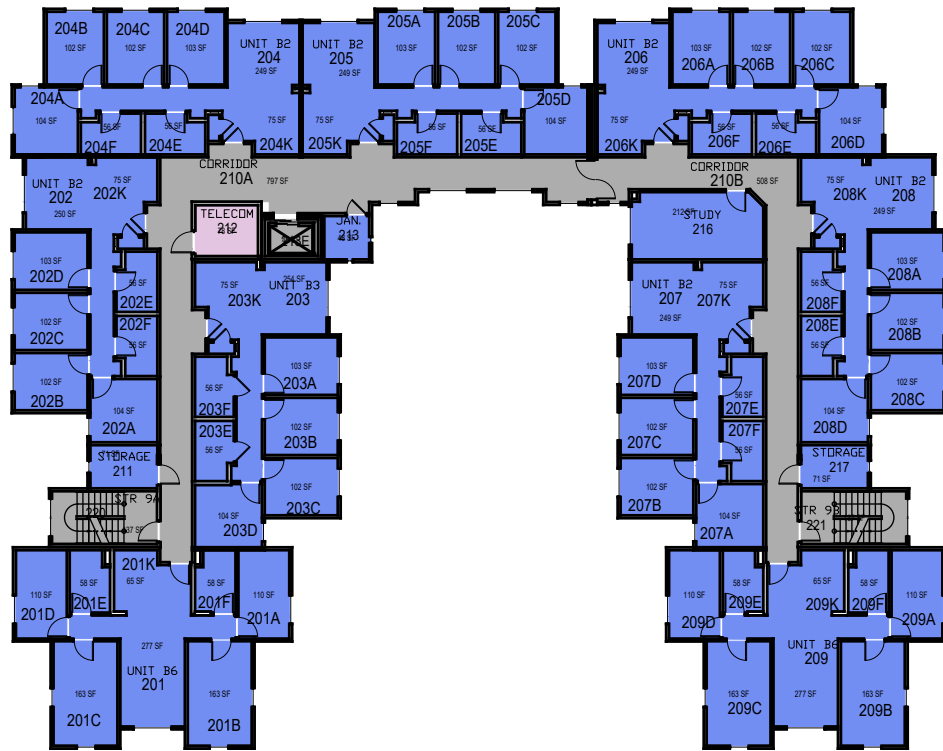
FACILITIES MANAGEMENT AND DEVELOPMENT

|              |             |                 |
|--------------|-------------|-----------------|
| 000 UNASSIGN | 400 STUDY   | 800 HEALTH      |
| 100 CLASS    | 500 SPECIAL | 900 RESIDENTIAL |
| 200 LAB      | 600 GENERAL |                 |
| 300 OFFICE   | 700 SUPPORT |                 |



1"-30'

Room Use



October 2020



**CAL POLY**

Dover

Floor 2  
Space Data [http://afd.calpoly.edu/facilities/spacefacility/space\\_data.asp](http://afd.calpoly.edu/facilities/spacefacility/space_data.asp)

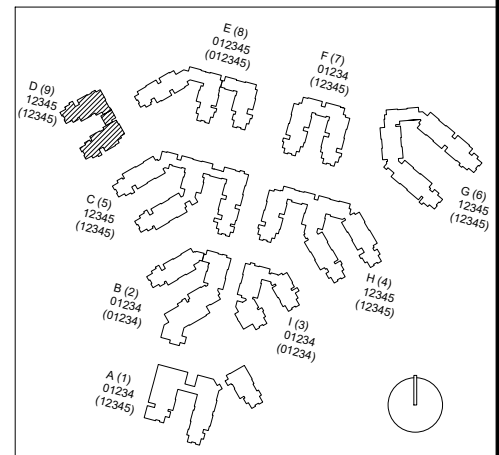
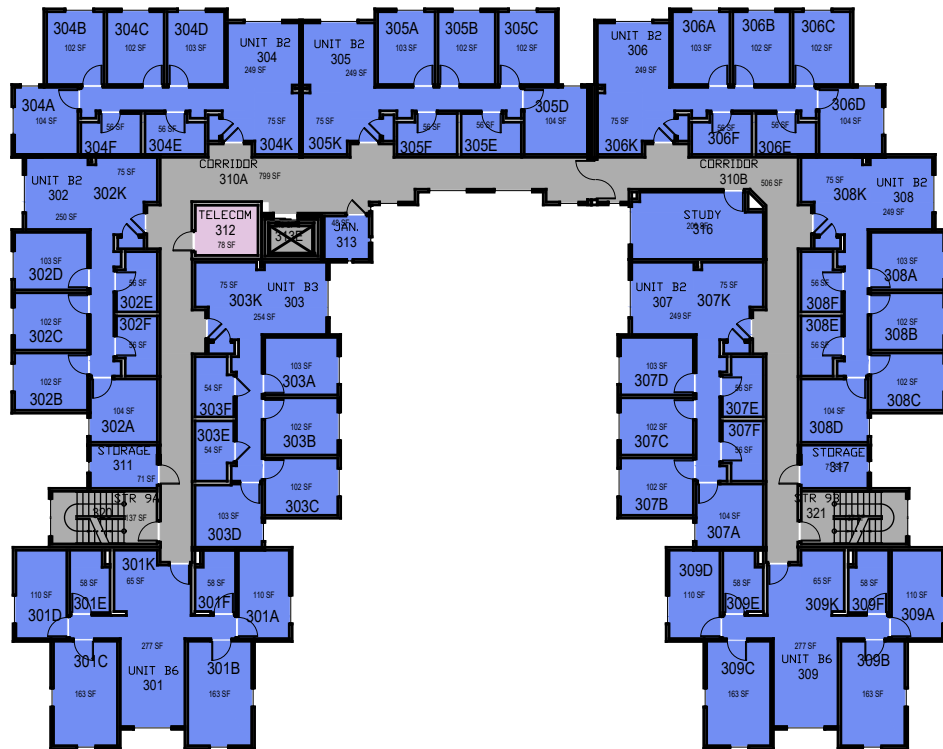
FACILITIES MANAGEMENT AND DEVELOPMENT

|              |             |                 |
|--------------|-------------|-----------------|
| 000 UNASSIGN | 400 STUDY   | 800 HEALTH      |
| 100 CLASS    | 500 SPECIAL | 900 RESIDENTIAL |
| 200 LAB      | 600 GENERAL |                 |
| 300 OFFICE   | 700 SUPPORT |                 |



1"-30'

Room Use



**CAL POLY**

Dover

Floor 3  
Space Data [http://afd.calpoly.edu/facilities/spacefacility/space\\_data.asp](http://afd.calpoly.edu/facilities/spacefacility/space_data.asp)

FACILITIES MANAGEMENT AND DEVELOPMENT

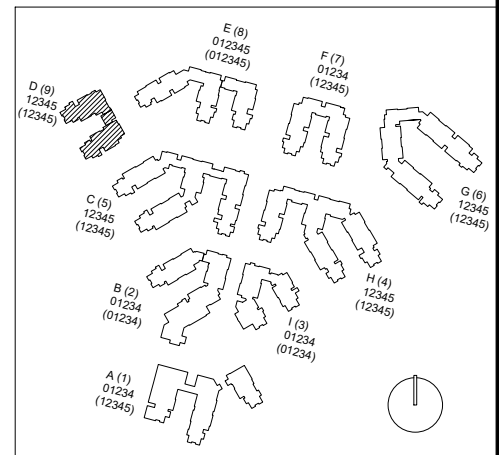
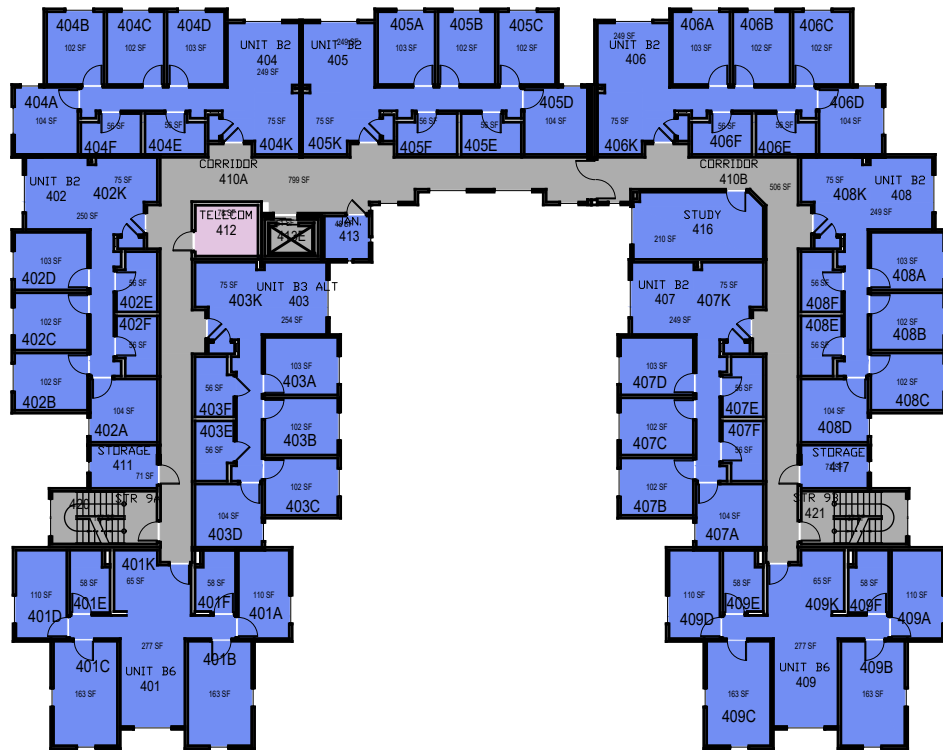
|              |             |                 |
|--------------|-------------|-----------------|
| 000 UNASSIGN | 400 STUDY   | 800 HEALTH      |
| 100 CLASS    | 500 SPECIAL | 900 RESIDENTIAL |
| 200 LAB      | 600 GENERAL |                 |
| 300 OFFICE   | 700 SUPPORT |                 |

Room Use

October 2020



1"-30'



October 2020



**CAL POLY**

Dover

Floor 4  
Space Data [http://afd.calpoly.edu/facilities/spacefacility/space\\_data.asp](http://afd.calpoly.edu/facilities/spacefacility/space_data.asp)

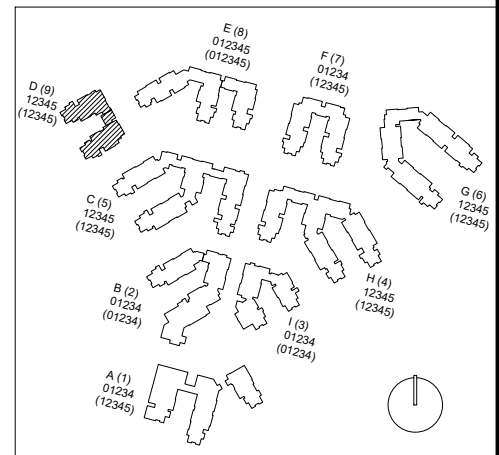
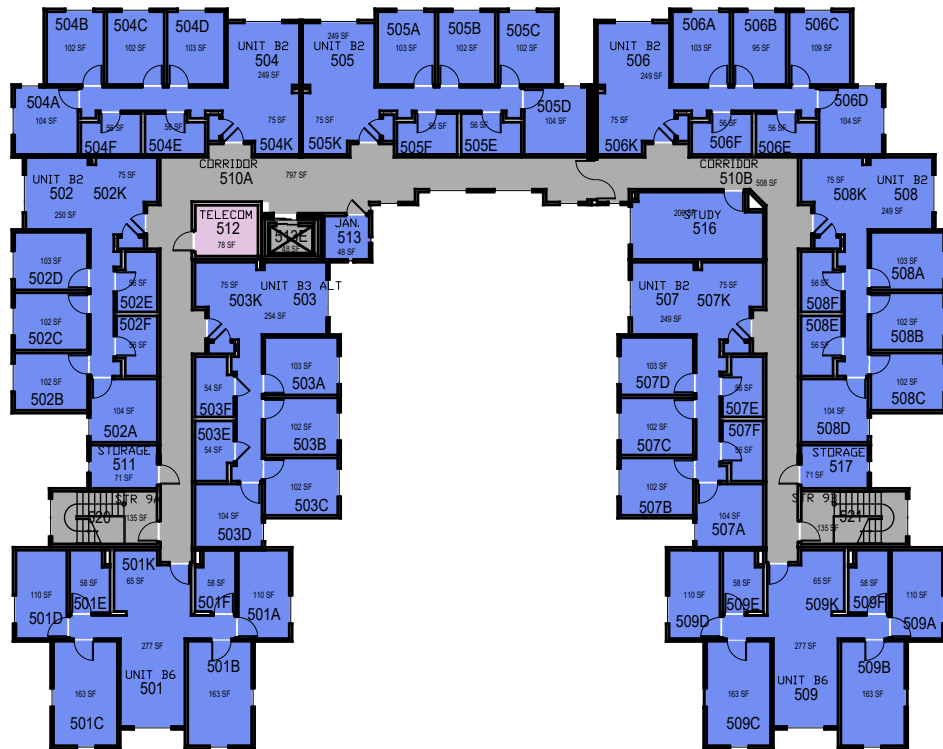
FACILITIES MANAGEMENT AND DEVELOPMENT

|              |             |                 |
|--------------|-------------|-----------------|
| 000 UNASSIGN | 400 STUDY   | 800 HEALTH      |
| 100 CLASS    | 500 SPECIAL | 900 RESIDENTIAL |
| 200 LAB      | 600 GENERAL |                 |
| 300 OFFICE   | 700 SUPPORT |                 |



1"-30'

Room Use



October 2020



**CAL POLY**

Dover

Floor 5  
Space Data [http://afd.calpoly.edu/facilities/spacefacility/space\\_data.asp](http://afd.calpoly.edu/facilities/spacefacility/space_data.asp)

FACILITIES MANAGEMENT AND DEVELOPMENT

|              |             |                 |
|--------------|-------------|-----------------|
| 000 UNASSIGN | 400 STUDY   | 800 HEALTH      |
| 100 CLASS    | 500 SPECIAL | 900 RESIDENTIAL |
| 200 LAB      | 600 GENERAL |                 |
| 300 OFFICE   | 700 SUPPORT |                 |

Room Use



1"-30'