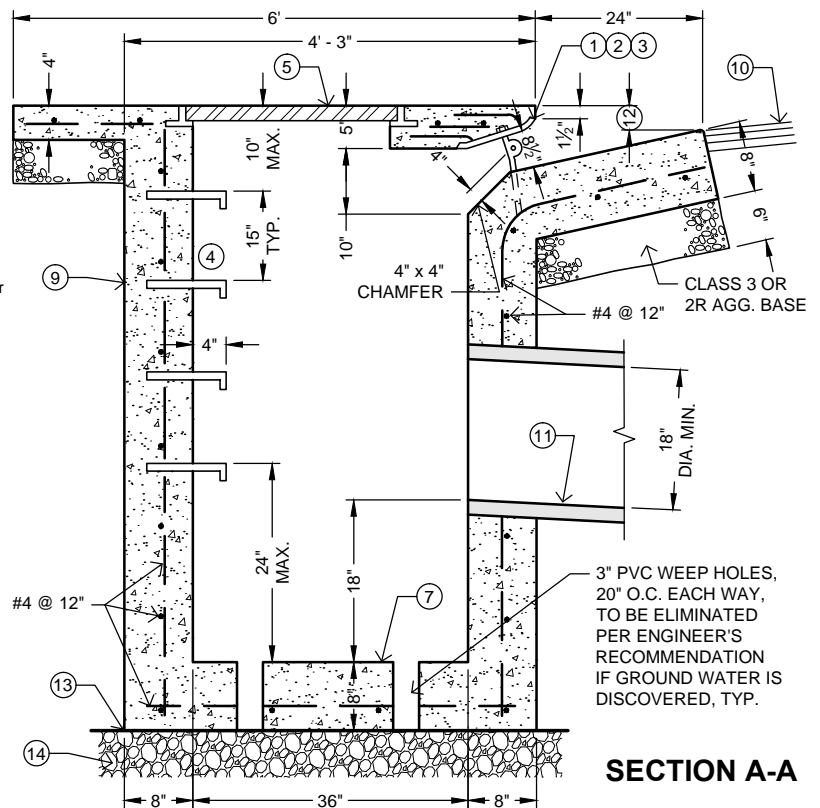


**INSTALLATION NOTES:**

Items 1 through 3 shall be galvanized Alhambra, South Bay Foundry or equal.

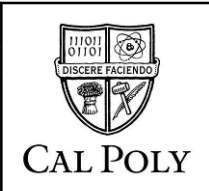
- ① Formed steel face plate: A-3911, with factory installed anchors. Face plate shall be 6" longer on each side of the opening at the face of the curb.
- ② Protection bar: A-1565; bar and anchors, A-1577
- ③ Protection bar support bolt(s): A-1574, spaced 20<sup>7</sup>/<sub>8</sub>" apart.
- ④ Steps are required when depth exceeds 4' and shall be steel reinforced polypropylene, M-A Industries PS2-PFS or equal.
- ⑤ Manhole frame and cover, South Bay Foundry 1530, Alhambra A-1530 or approved equal, placed adjacent to the back wall in the center of the basin. Where the horizontal dimension of the basin equals or exceeds 8', a second lid shall be installed. One lid over the outlet and a second lid centered in the remaining area or as directed by the Engineer.
- ⑥ Reinforcing steel shall be covered by no less than 1<sup>1</sup>/<sub>2</sub>" of concrete in the top and no less than 2" in the rest of the structure.
- ⑦ Floor of the basin (including extended opening for Engineering Standard 3360) shall be smooth and shall slope 8.3% toward the outlet.
- ⑧ Top of catch basin shall slope 2% toward curb.
- ⑨ Concrete shall be Class 3.
- ⑩ See Engineering Standard 4110 for notes regarding required pavement removal and repair.
- ⑪ Inlet and outlet pipe(s) may be placed in any wall.
- ⑫ Height equals 4" for a 6" curb and 6" for an 8" curb.
- ⑬ Filter fabric shall be placed between concrete and gravel. Overlap sheet of fabric 6". Filter fabric shall conform to the requirements in Section 88 of the Standard Specifications and shall be permeable and non-woven. Filter fabric shall be MIRAFI 140 or equal.
- ⑭ 6" of 1<sup>1</sup>/<sub>2</sub>" diameter gravel.
- ⑮ Install Catch Basin Placard per Section 77-4 of the Standard Specifications.



**SECTION A-A**

SCALE: N.T.S.

STANDARD CURRENT AS OF:	01/21/2020
APPROVED BY:	XX
NOTES:	



**CATCH BASIN  
SIDE OPENING  
WITH SUMP**

3355