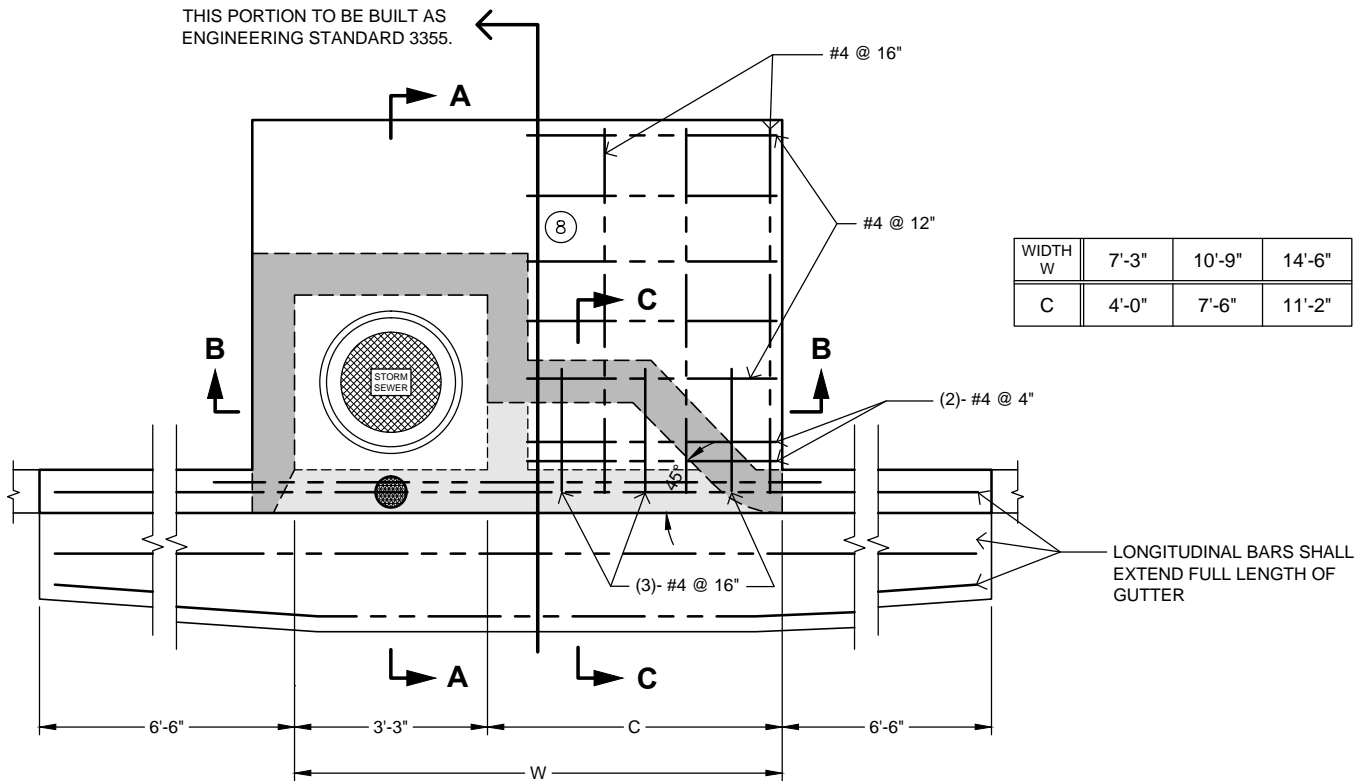
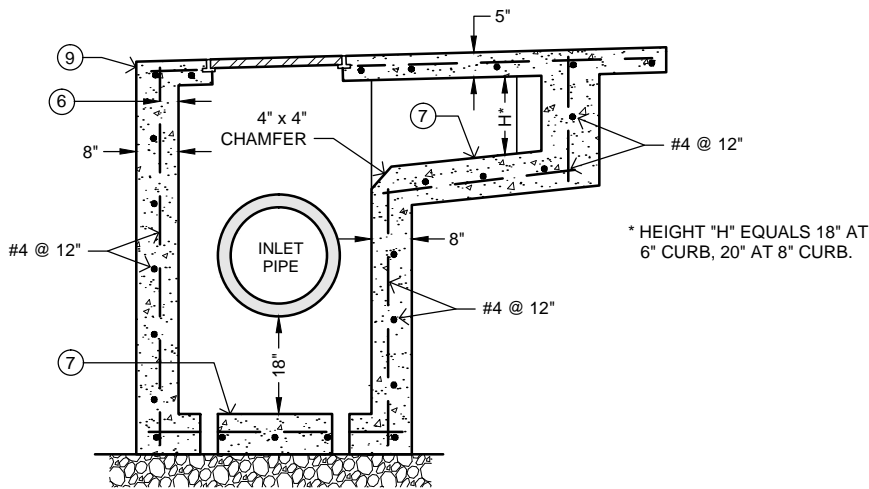


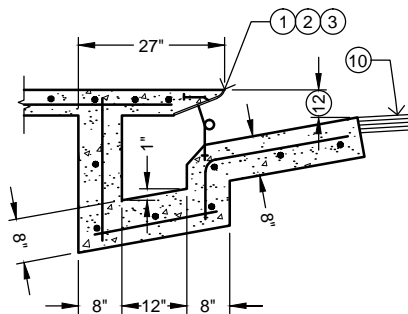
THIS PORTION TO BE BUILT AS  
ENGINEERING STANDARD 3355.



PLAN



SECTION B-B



SECTION C-C

**GENERAL NOTES:**

- A. See Engineering Standards 3350 and 3355 for Notes and Section A-A.
- B. Install Catch Basin Placard per Section 77-4 of the Standard Specifications.

SCALE: N.T.S.

STANDARD CURRENT AS OF: 01/21/2020

APPROVED BY: XX

NOTES:



CAL POLY

**CATCH BASIN  
EXTENDED SIDE OPENING**

3360