

SCORIATED SECURE NICKEL BRONZE TOP  
INSTALL FLUSH WITH FINISHED FLOOR

WHEN A BACKWATER VALVE IS INSTALLED  
DOWNSTREAM OF CLEANOUT, ENGRAVE  
"BACKWATER VALVE DOWNSTREAM" ON PLUG

BRONZE PLUG

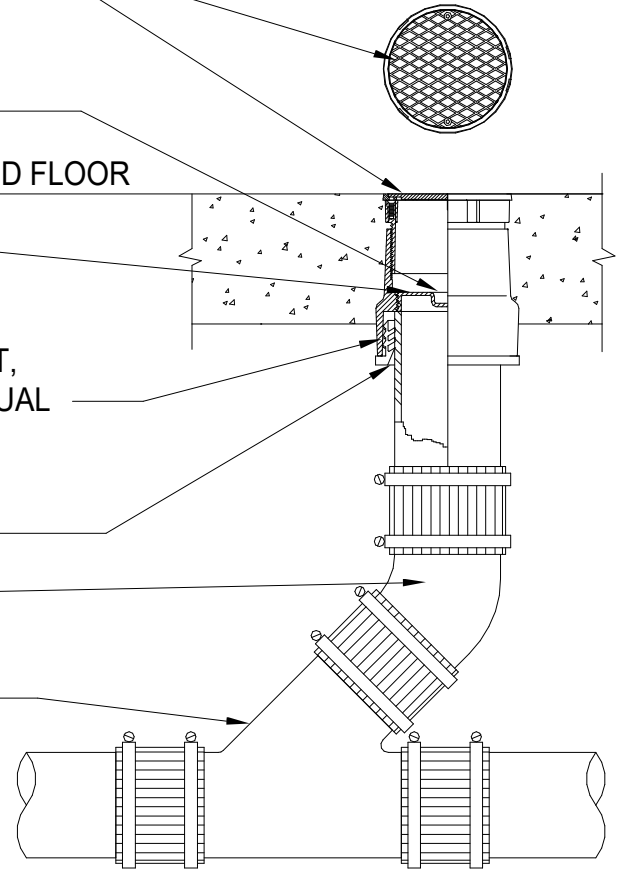
FINISHED FLOOR

ADJUSTABLE CLEANOUT WITH LEVELING ADJUSTMENT,  
CAST IRON BODY, JR SMITH #4112L OR APPROVED EQUAL

GASKETED OR NO-HUB JOINT

1/8" BEND

WYE BRANCH, USE 1/4 BEND LONG SWEEP  
AT END OF RUN (SIZE AS REQUIRED)



CLEANOUTS IN PIPING 2" OR LESS SHALL HAVE A CLEARANCE OF NOT LESS THAN 18" X 18" IN FRONT OF THE CLEANOUT, CLEANOUTS IN PIPING LARGER THAN 2" INCHES SHALL HAVE A CLEARANCE OF NOT LESS THAN 24" X 24".

CLEANOUTS: CPC TABLE 707.1

PIPE SIZE	CLEANOUT SIZE	THREADS (PER INCH)
1-1/2" - 2"	1-1/2"	11-1/2
2-1/2" - 3"	2-1/2"	8
4" & LARGER	3-1/2"	8

## FLOOR CLEANOUT

NTS

STANDARD CURRENT AS OF: 01/01/2025

APPROVED BY: FMD

NOTES:



CAL POLY

FLOOR CLEANOUT

6840