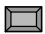

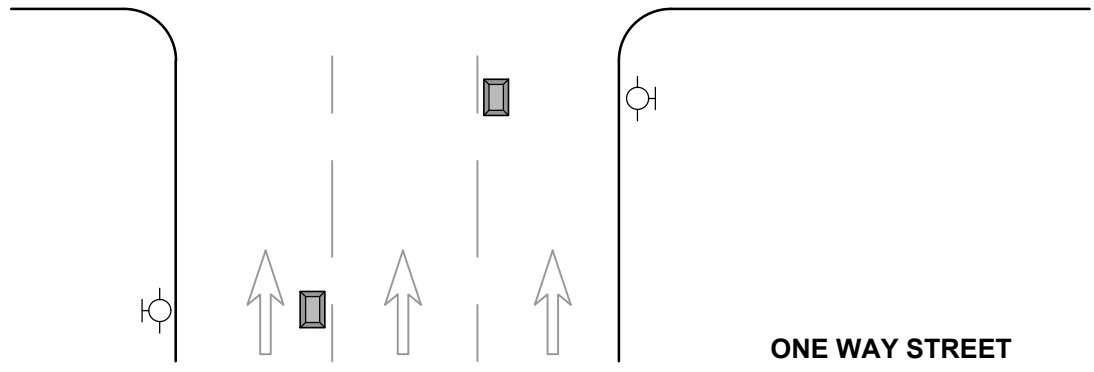


SYMBOLS:
 Reflector
 Hydrant

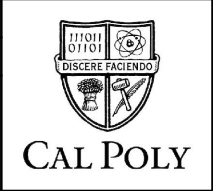


GENERAL NOTES:

- A. Reflectors shall be 2-way blue reflective markers and shall conform to the standards set forth for reflective markers by the State of California Department of Transportation.
- B. Reflectors shall be set on the hydrant side of the adjacent traffic stripe. Where no stripes exist, reflector should be placed in the center of the pavement.
- C. When hydrants are within 100' of an intersection, a marker shall be placed on the cross street as well.
- D. Reflectors shall be set behind the pedestrian crossing area at an intersection.
- E. Reflectors shall be cemented to the pavement in accordance with the requirements of Section 85, "PAVEMENT MARKERS" of the State of California Department of Transportation Standard Specifications.

SCALE: N.T.S.

STANDARD CURRENT AS OF:	10/21/2019
APPROVED BY:	XX
NOTES:	



HYDRANT REFLECTOR

7920