


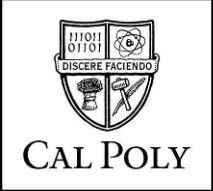
REVISIONS			
REV.	DESCRIPTION	INITIALS	DATE

CUSTOMER APPROVAL - Engineer of Record
PRINT NAME: _____
SIGNATURE: _____
COMPANY: _____
DATE: _____

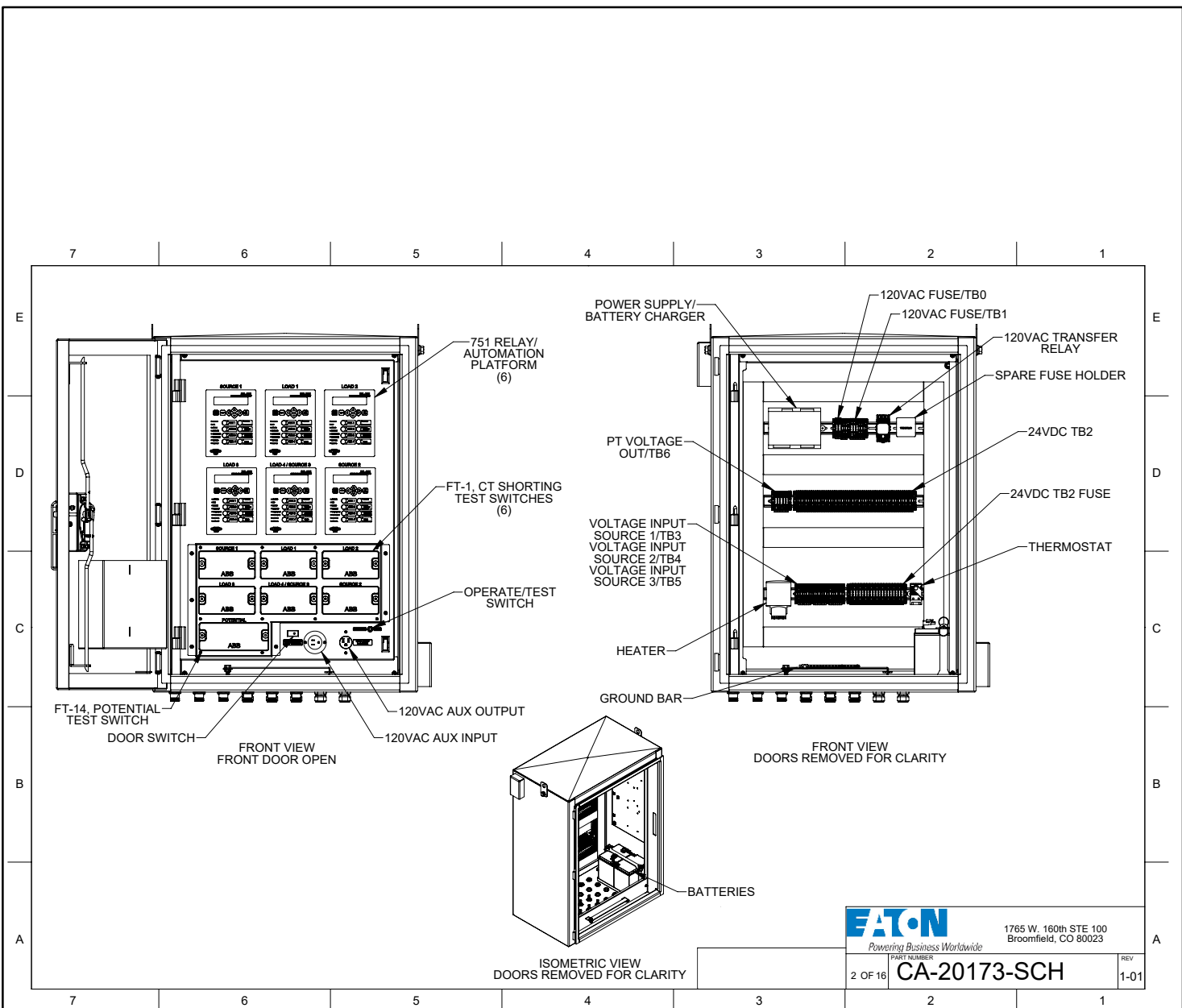
Control Cabinet for use with Eaton-ISG catalog # PS606066666-102A-A01-P2.
Project: Cal Poly SLO

ENG K YANG DATE 13 AUG 2024	DATE 13 AUG 2024	CONTROL CABINET, 6WAY, (6) 751 RELAYS, (6) FT-1 SHORTING, (1) FT-14 POTENTIAL	 Powering business Worldwide 1765 W. 160th STE 100 Broomfield, CO 80023	PART NUMBER CA-20173-SCH	REV 1-01
DRAWN K YANG DATE 13 AUG 2024	DATE 13 AUG 2024			1 OF 16	

STANDARD CURRENT AS OF: 01/01/2025
 APPROVED BY: FMD
 NOTES:



PROTECTION CABINET
 D10-1



STANDARD CURRENT AS OF: 01/01/2025

APPROVED BY: FMD

NOTES:

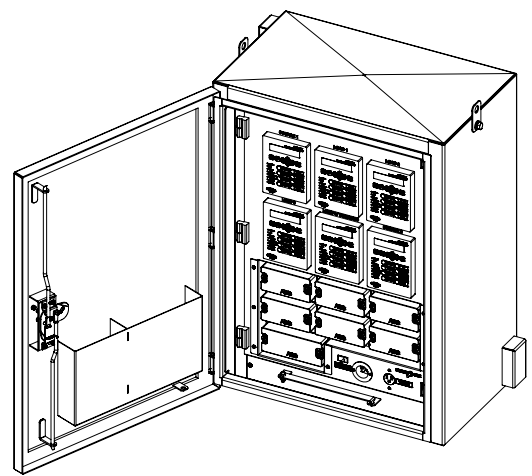


CAL POLY

PROTECTION CABINET

D10-2

ITEM NO.	PART NUMBER	DESCRIPTION	QTY.
1	RLY-0089	751002B1B0X0XL50231, 8PB, 4DI/4DO, ETH/FIBER, 61850/DNP3, LEA, 5A, CC	6
2	PP-10340	VENT, CONTROL CABINET, PLASTIC, HOFFMAN # APCDABS	2
3	PP-10328	THERMOSTAT, STEGO KT 011 SERIES# 01140.9-00	1
4	PP-10350	TB, TERMINAL BLOCK, WEIDMULLER WDU4 ##1020100000	79
5	PP-10319	CONTROL CABINET HEATER , STEGO 14001.0-00, 30 WATT 120-240 VAC	1
6	PP-10349	TB, FUSE HOLDER, WEIDMULLER WSI #1011000000	29
7	CON-0012	CONNECTOR, 7 PIN FEMALE, 2/14GA, 5/18GA, 6 FT., (1.8M), MENCOM #MINH-7FR2-1.8M-18-SS-1SG	6
8	CON-0022	CONNECTOR, FEMALE 6 PIN, 16AWG, MENCOM#MIN-6FR-6-SS	6
9	CON-0014	CONNECTOR, 4 PIN, MALE, 14 GA, MENCOM #MINH-4MR-2M-SS	6
10	CON-0011	CONNECTOR, 3 PIN, MALE, 14 GA, 2M PIGTAIL, MENCOM# MINH-3MR-2M-SS	2
11	PP-10382	CORD GRIP, 304 S/S, 1/2 NPT THREAD, CABLE SIZE .375 TO .438" REMKE# RSSS-107	12
12	CON-0021	CONNECTOR, 4 PIN, FEMALE, 14 GA, MENCOM #MINH-4FRM-2M-SS	2
13	CAB-0061	CABLE, 10 FEET, ETHERNET, MOT#CA605CBX010, KEY CODE 3834	6
14	PP-10347	TB, END CLAMP, WEIDMULLER WEW 35/2 END ANCHOR #1061200000	13
15	PP-11023	POWER SUPPLY, 120AC/24VDC, 20 AMP OUTPUT, NEWMAR# DIN-UPS 24-20	1
16	PP-10324	RELAY, DPDT, 15 AMP, 120, TE ELECTRONICS, #KUMP-11A18-120	1
17	PP-10391	BAR, GROUNDING, 14 POSITION, EATON# GBK1420 OR EQUIV	1
18	PP-10305	BATTERY-28AH-12VDC, POWER SONIC-PS-12280	2
19	PP-10972	HOUSING, RECEPTACLE, 2POS, MOLEX 42816-0212 OR EQUIV	1
20	PP-10973	HOUSING, PLUG, 2POS, MOLEX 42818-0212 OR EQUIV	1
21	PP-10315	PLUG, HUBBLE RECEPTACLE, #HBL5261	1
22	PP-10247	FLANGED INLET, 15 AMP, 120 AC, HUBBELL# HBL5278C	1
23	PP-10311	SWITCH, TOGGLE, DPDT, HONEYWELL #2NT1-3	1
24	PP-10316	DOOR SWITCH, HONEYWELL S&C #1DM1	1
25	PP-11191	FT-1 CT SHORTING SWITCHES, STYLE #C991A00DG01, T T C-C C-C W W, P2 P2 C1-C1 C1-C1 C1-C1 P8 P8, W/ CLEAR COVER	6
26	PP-10504	FT-14 POTENTIAL BLOCK, FT4A14T14BN4001	1
27	CON-0068	COUPLER BULKHEAD, ETHERNET RJ45 FEED THROUGH, WITH CAP, L-COM# WBRJC6A-FF OR EQUIV	6
28	PP-11158	SPARE FUSE HOLDER, WEIDMULLER #7914760001	1
29	PP-10325	SOCKET, RELAY, TRACK MOUNT, 27E893, TE ELECTRONICS-----C-2-1419106-5-D-3D	1



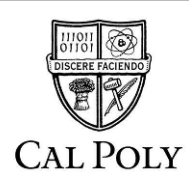
EATON
 Powering Business Worldwide
 1765 W. 160th STE 100
 Broomfield, CO 80023

3 OF 16 **CA-20173-SCH** REV 1-01

STANDARD CURRENT AS OF: 01/01/2025

APPROVED BY: FMD

NOTES:



PROTECTION CABINET

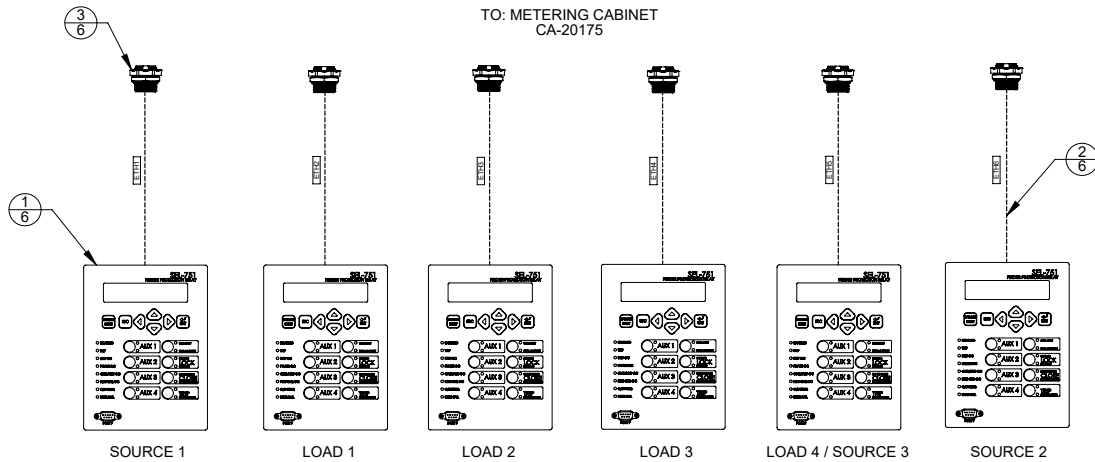
D10-3

ITEM NO.	PART NUMBER	DESCRIPTION	QTY.
1	RLY-0089	751002B1B0X0XL50231, 8PB, 4DI/4DO, ETH/FIBER, 61850/DNP3, LEA, 5A, CC	6
2	CAB-0061	CABLE, 10 FEET, ETHERNET, MOT#CA605CBX010, KEY CODE 3834	6
3	CON-0068	COUPLER BULKHEAD, ETHERNET RJ45 FEED THROUGH, WITH CAP, L-COM# WBRJC6A-FF OR EQUIV	6

SEL CABLE SCHEDULE			
DEVICE - PORT	CABLE	WIRE LABEL	DEVICE - PORT
S1 SEL 751	CAB-0061	ETH1	SEL 2740S - PORT 1
L1 SEL 751	CAB-0061	ETH2	SEL 2740S - PORT 2
L2 SEL 751	CAB-0061	ETH3	SEL 2740S - PORT 3
L3 SEL 751	CAB-0061	ETH4	SEL 2740S - PORT 4
L4/S3 SEL 751	CAB-0061	ETH5	SEL 2740S - PORT 5
S2 SEL 751	CAB-0061	ETH6	SEL 2740S - PORT 6

NOTE: LABEL CABLES ON EACH END USING BRADY ADHESIVE WRAP-AROUND LABELS

- B-1
- B-2
- B-3
- B-4
- C-1
- C-2



COM CONNECTIONS

Eaton
Powering Business Worldwide
1765 W. 160th STE 100
Broomfield, CO 80023

PART NUMBER: **CA-20173-SCH** REV: 1-01

4 OF 16

STANDARD CURRENT AS OF: 01/01/2025

APPROVED BY: FMD

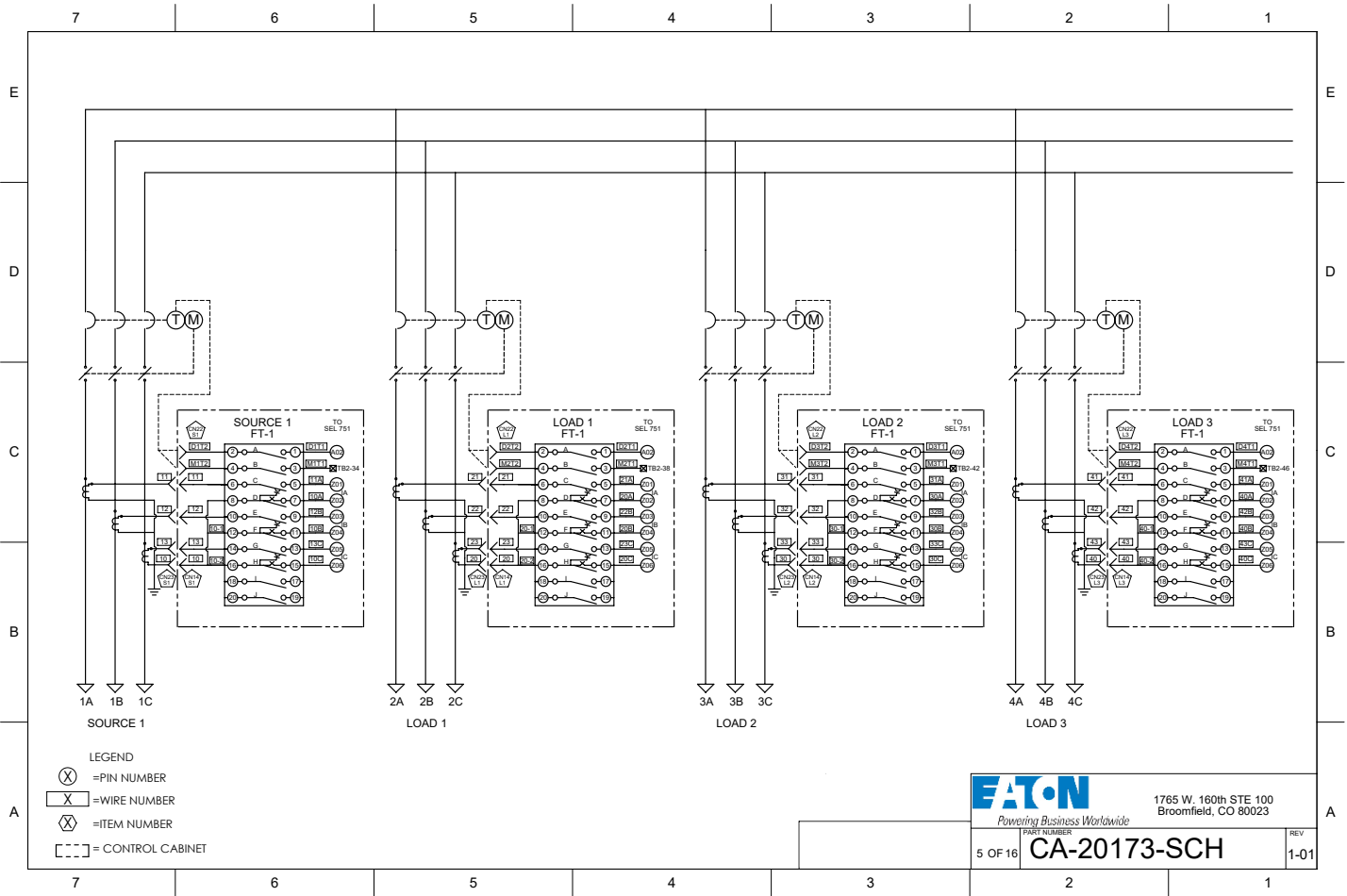
NOTES:



CAL POLY

PROTECTION CABINET

D10-4



5 OF 16	EATON Powering Business Worldwide PROFIT PARTNER	1765 W. 160th STE 100 Broomfield, CO 80023	REV
	CA-20173-SCH		
			1-01

STANDARD CURRENT AS OF: 01/01/2025

APPROVED BY: FMD

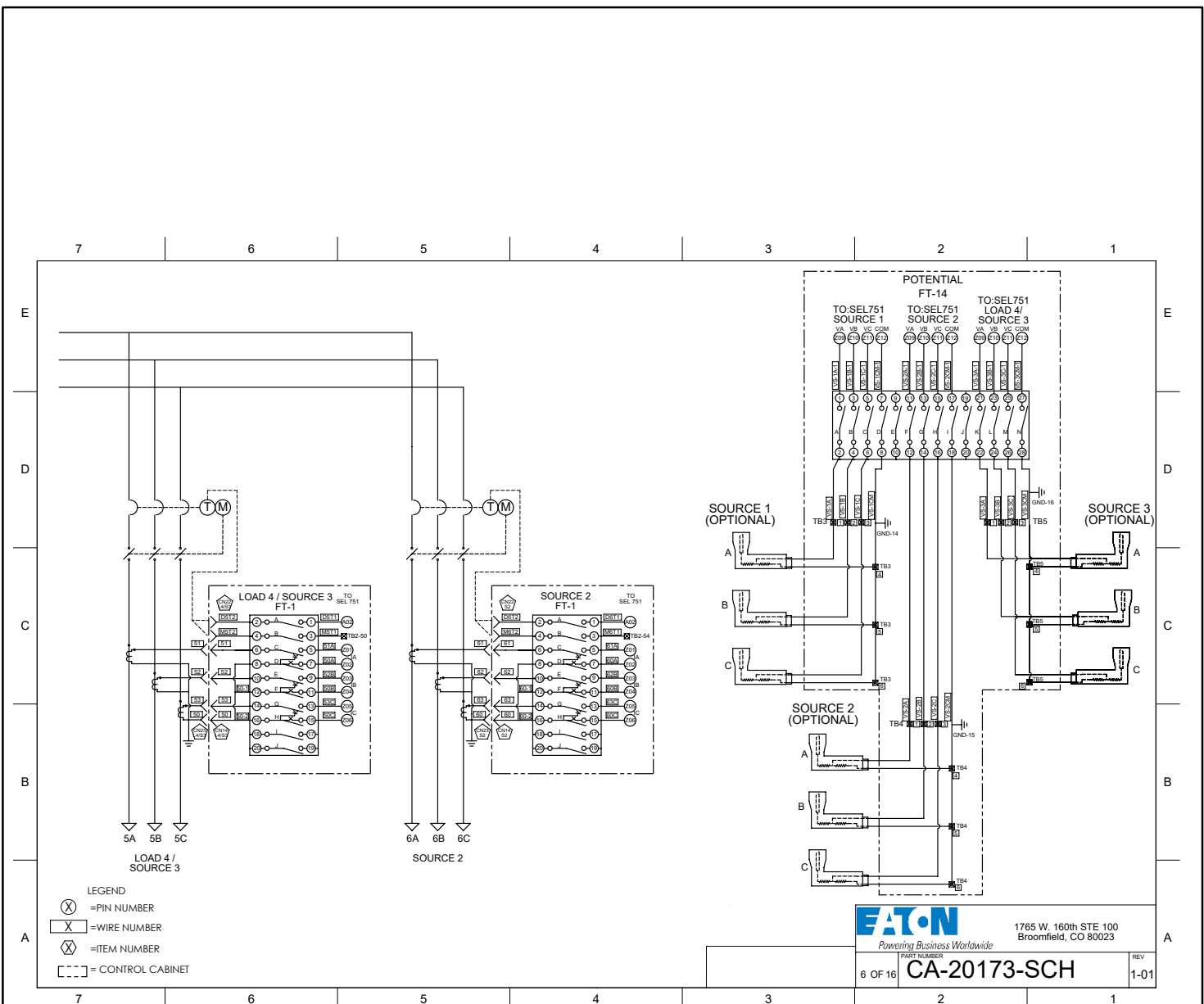
NOTES:



CAL POLY

PROTECTION CABINET

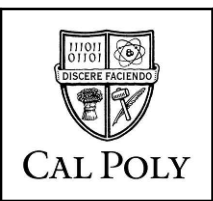
D10-5



STANDARD CURRENT AS OF: 01/01/2025

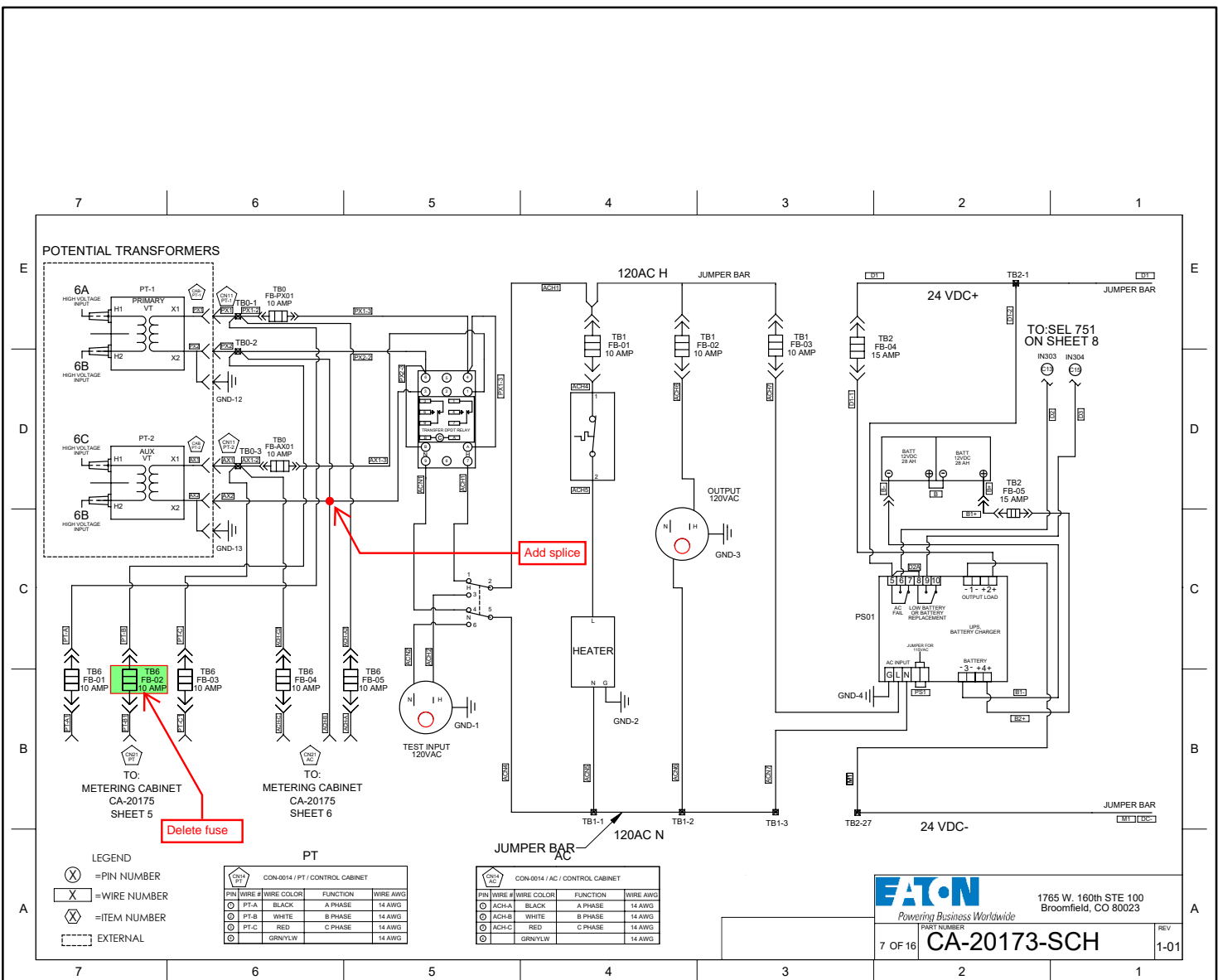
APPROVED BY: FMD

NOTES:



PROTECTION CABINET

D10-6



Eaton 1765 W. 160th STE 100
Broomfield, CO 80023

Powering Business Worldwide

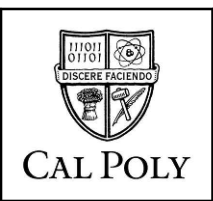
PART NUMBER
CA-20173-SCH

7 OF 16 REV 1-01

STANDARD CURRENT AS OF: 01/01/2025

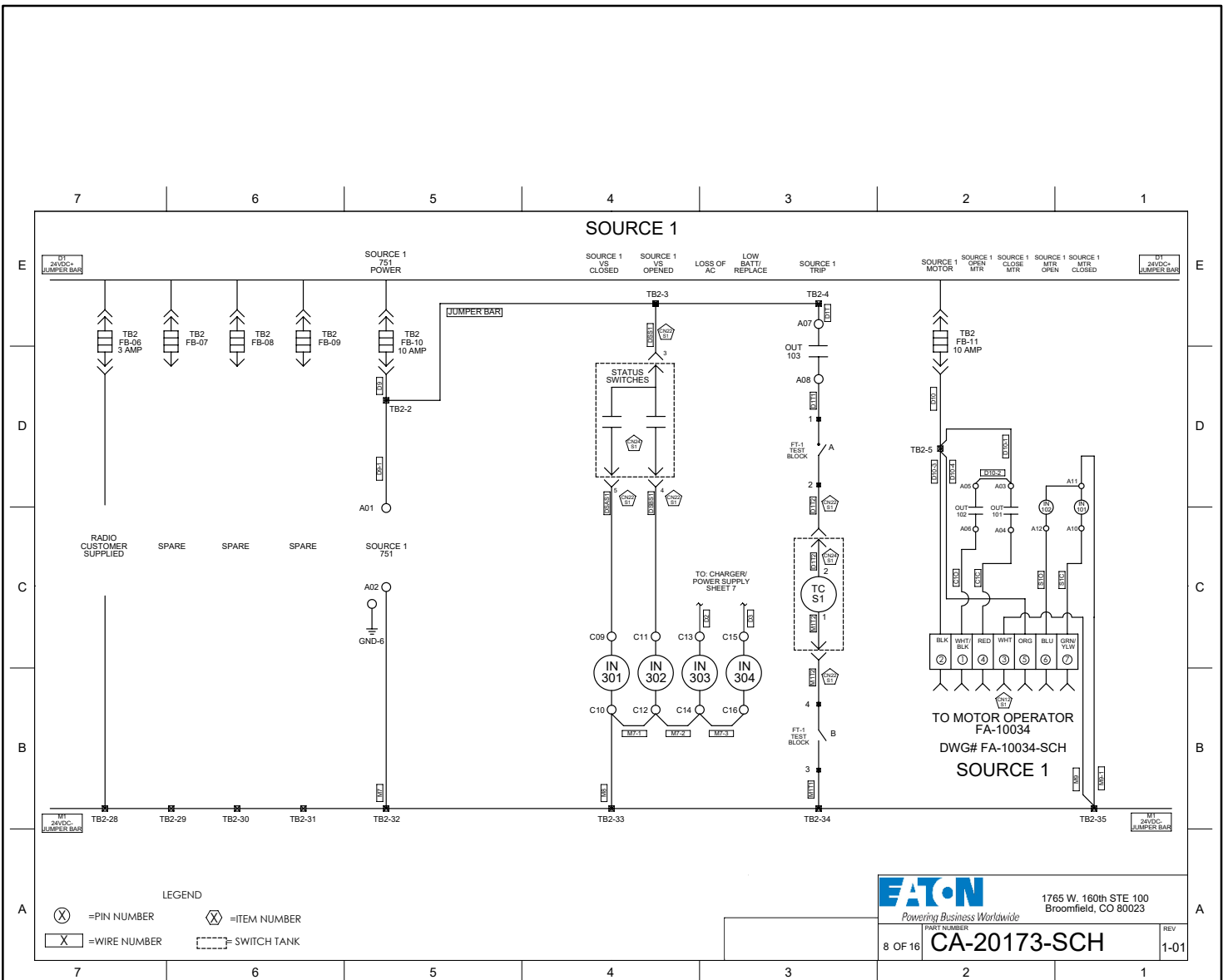
APPROVED BY: FMD

NOTES:



PROTECTION CABINET

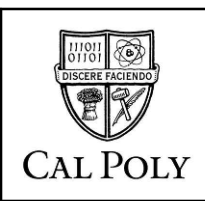
D10-7



STANDARD CURRENT AS OF: 01/01/2025

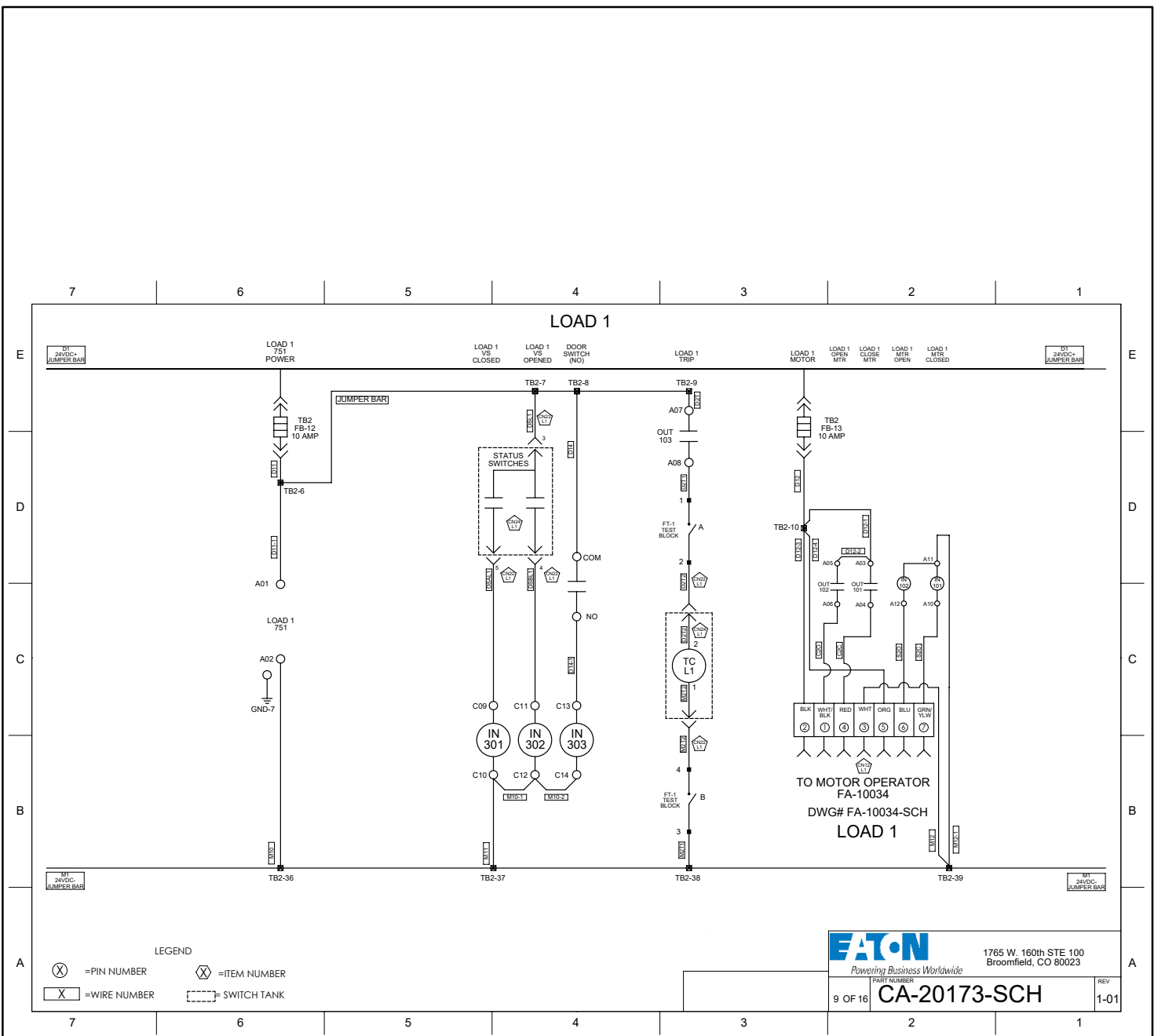
APPROVED BY: FMD

NOTES:



PROTECTION CABINET

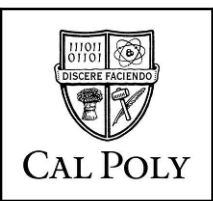
D10-8



STANDARD CURRENT AS OF: 01/01/2025

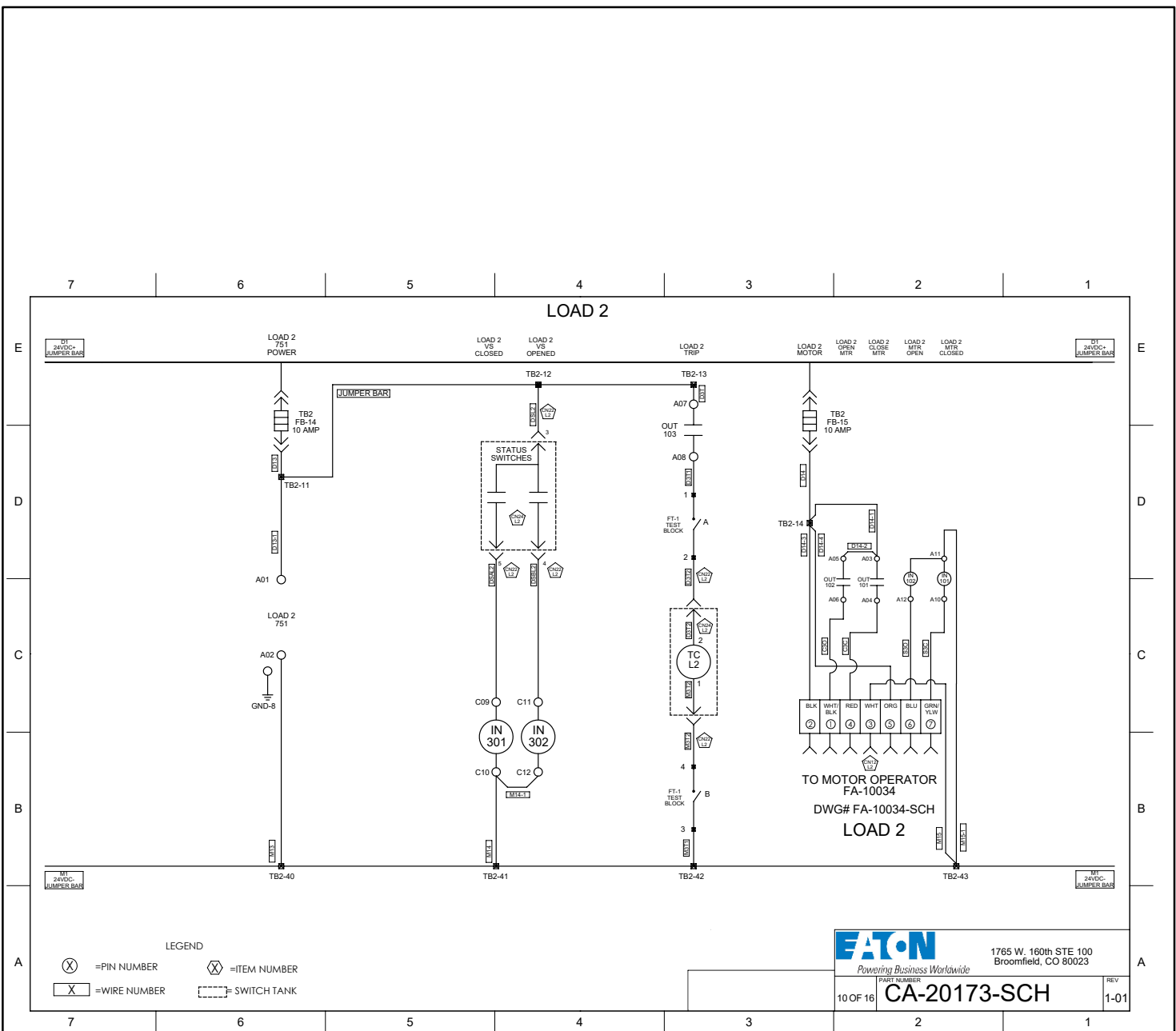
APPROVED BY: FMD

NOTES:

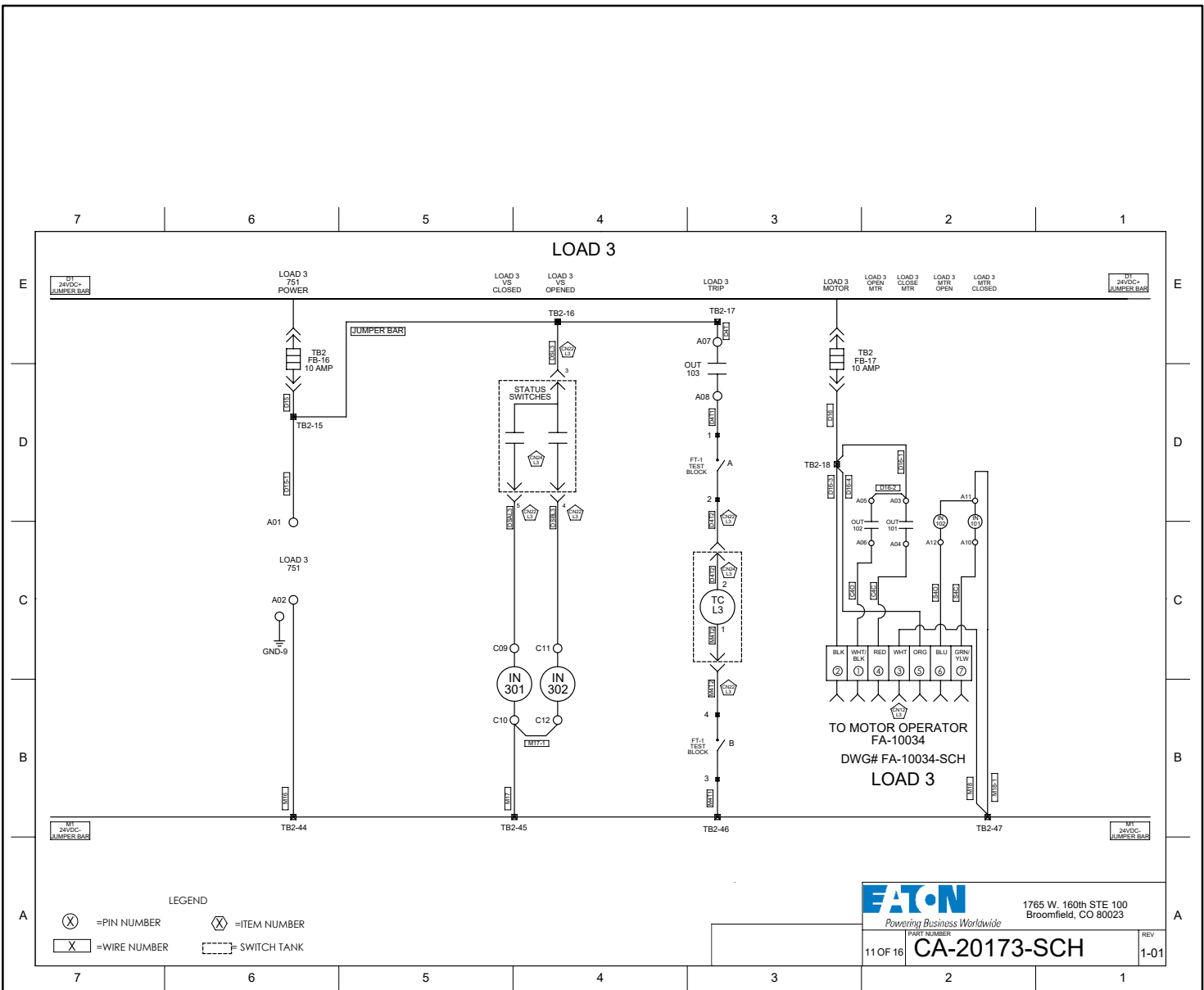


PROTECTION CABINET

D10-9



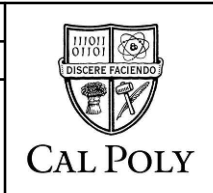
<p>LEGEND</p> <p>(X) = PIN NUMBER (X) = ITEM NUMBER</p> <p>(X) = WIRE NUMBER (---) = SWITCH TANK</p>		<p>FATON Powering Business Worldwide 1765 W. 160th STE 100 Broomfield, CO 80023</p>	
<p>STANDARD CURRENT AS OF: 01/01/2025</p>		<p>PART NUMBER CA-20173-SCH</p>	
<p>APPROVED BY: FMD</p>		<p>REV 1-01</p>	
<p>NOTES:</p>		<p>10 OF 16</p>	



STANDARD CURRENT AS OF: 01/01/2025

APPROVED BY: FMD

NOTES:



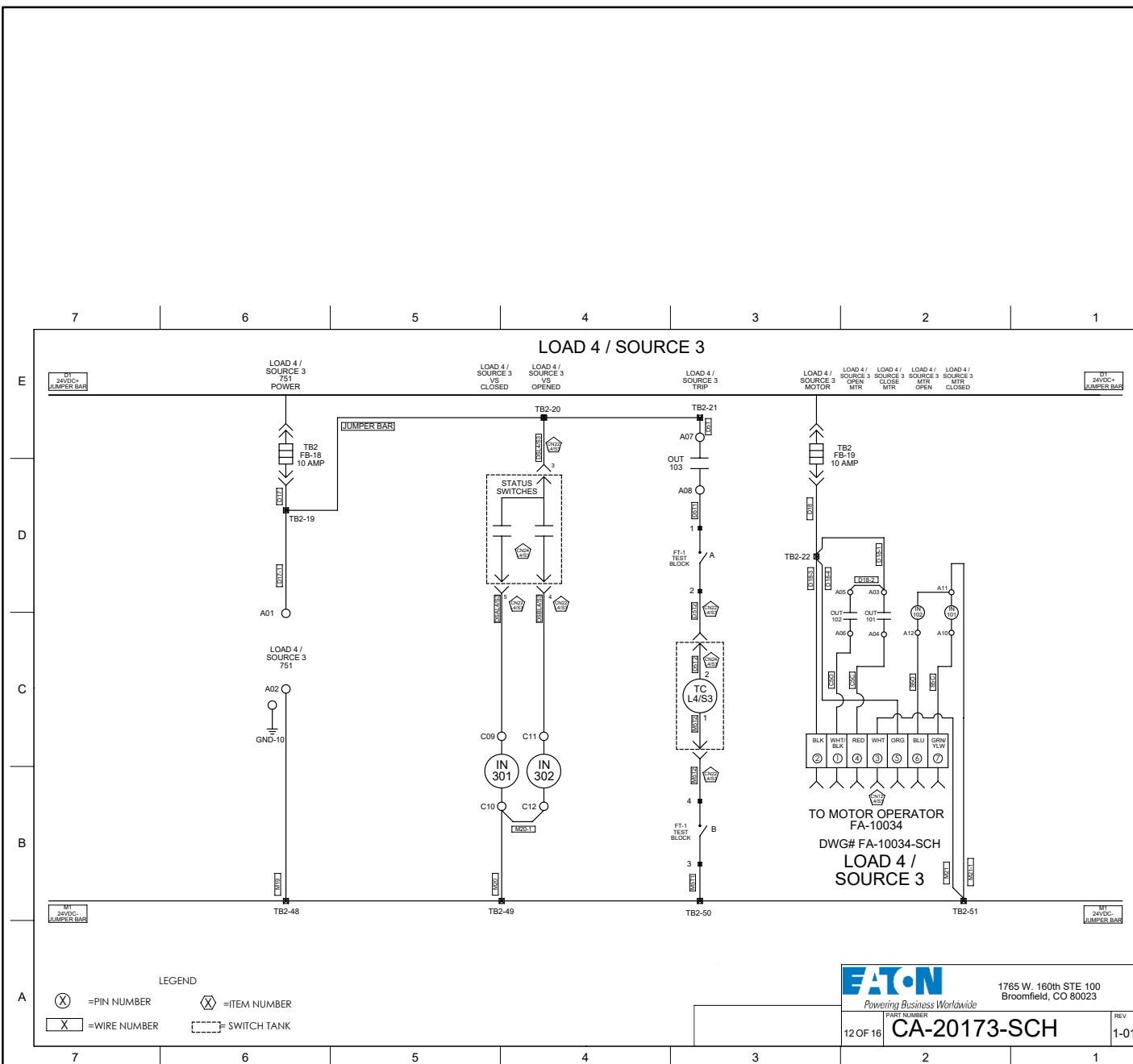
PROTECTION CABINET

D10-11

EATON
Powering Business Worldwide

1765 W. 160th STE 100
Broomfield, CO 80023

11 OF 16 **CA-20173-SCH** REV 1-01

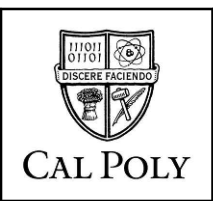


		1765 W. 160th STE 100 Broomfield, CO 80023
12 OF 16	PART NUMBER CA-20173-SCH	REV 1-01

STANDARD CURRENT AS OF: 01/01/2025

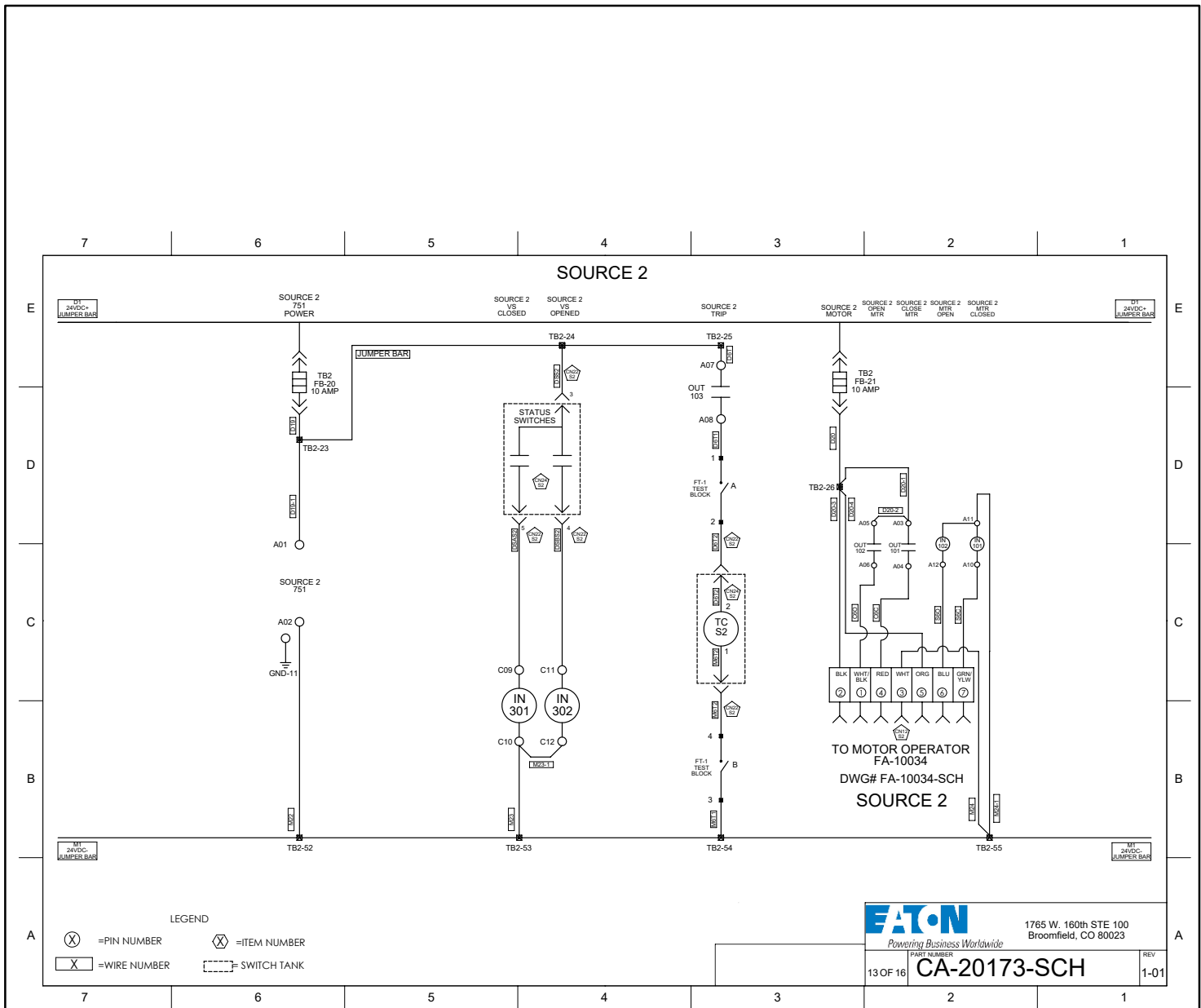
APPROVED BY: FMD

NOTES:



PROTECTION CABINET

D10-12



STANDARD CURRENT AS OF: 01/01/2025

APPROVED BY: FMD

NOTES:



CAL POLY

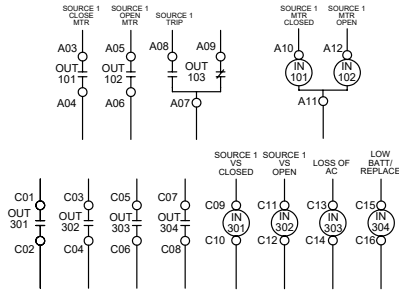
PROTECTION CABINET

D10-13

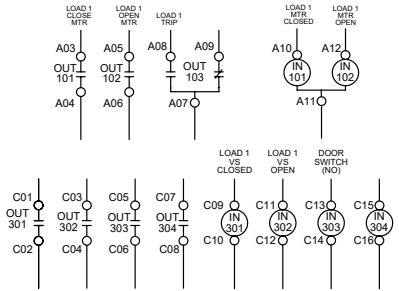
7 6 5 4 3 2 1

E

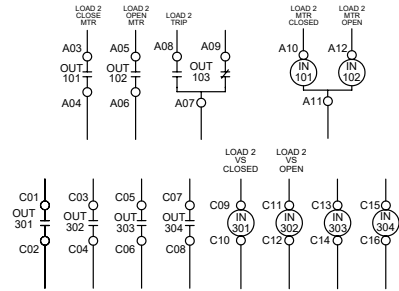
**SEL 751 INPUT AND OUTPUT LIST
SOURCE 1**



**SEL 751 INPUT AND OUTPUT LIST
LOAD 1**

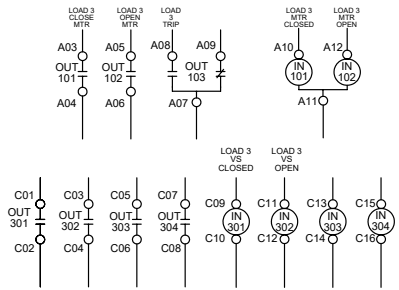


**SEL 751 INPUT AND OUTPUT LIST
LOAD 2**

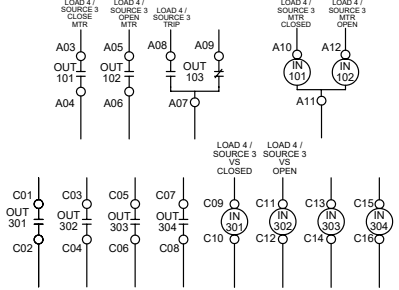


D

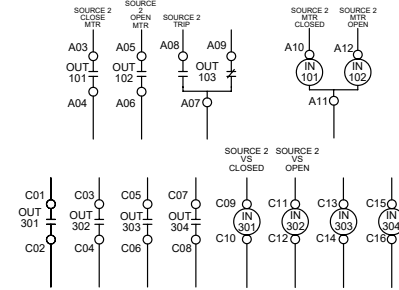
**SEL 751 INPUT AND OUTPUT LIST
LOAD 3**



**SEL 751 INPUT AND OUTPUT LIST
LOAD 4 / SOURCE 3**



**SEL 751 INPUT AND OUTPUT LIST
SOURCE 2**



C

B

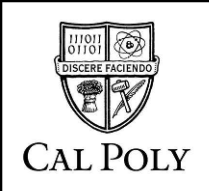
A

EATON Powering Business Worldwide		1765 W. 160th STE 100 Broomfield, CO 80023
PART NUMBER	CA-20173-SCH	
14 OF 16	REV	1-01

STANDARD CURRENT AS OF: 01/01/2025

APPROVED BY: FMD

NOTES:



PROTECTION CABINET

D10-14

CONNECTOR SCHEDULE- CONTROL CABINET

CON-0022 / SOURCE1-TNS / CONTROL CABINET

WIRE #	WIRE COLOR	FUNCTION	WIRE AWG
M1T2	WHITE	TRIP COIL +	18 AWG
D1T2	RED	TRIP COIL +	18 AWG
DSS1	GRN/YLW	STATUS SW COMMON	16 AWG
DSS1	ORANGE	STATUS SW OPEN	16 AWG
DSAS1	BLACK	STATUS SW CLOSED	16 AWG
	BLUE		18 AWG

CON-0022 / LOAD1-TNS / CONTROL CABINET

WIRE #	WIRE COLOR	FUNCTION	WIRE AWG
M2T2	WHITE	TRIP COIL +	18 AWG
D2T2	RED	TRIP COIL +	18 AWG
DSL1	GRN/YLW	STATUS SW COMMON	16 AWG
DSL1	ORANGE	STATUS SW OPEN	16 AWG
DSL1	BLACK	STATUS SW CLOSED	16 AWG
	BLUE		18 AWG

CON-0022 / LOAD2-TNS / CONTROL CABINET

WIRE #	WIRE COLOR	FUNCTION	WIRE AWG
M2T2	WHITE	TRIP COIL +	18 AWG
D2T2	RED	TRIP COIL +	18 AWG
DSL2	GRN/YLW	STATUS SW COMMON	16 AWG
DSL2	ORANGE	STATUS SW OPEN	16 AWG
DSL2	BLACK	STATUS SW CLOSED	16 AWG
	BLUE		18 AWG

CON-0022 / LOAD3-TNS / CONTROL CABINET

WIRE #	WIRE COLOR	FUNCTION	WIRE AWG
M2T2	WHITE	TRIP COIL +	18 AWG
D2T2	RED	TRIP COIL +	18 AWG
DSL3	GRN/YLW	STATUS SW COMMON	16 AWG
DSL3	ORANGE	STATUS SW OPEN	16 AWG
DSL3	BLACK	STATUS SW CLOSED	16 AWG
	BLUE		18 AWG

CON-0022 / L4/S3-TNS / CONTROL CABINET

WIRE #	WIRE COLOR	FUNCTION	WIRE AWG
M2T2	WHITE	TRIP COIL +	18 AWG
D2T2	RED	TRIP COIL +	18 AWG
DSL4/S3	GRN/YLW	STATUS SW COMMON	16 AWG
DSL4/S3	ORANGE	STATUS SW OPEN	16 AWG
DSL4/S3	BLACK	STATUS SW CLOSED	16 AWG
	BLUE		18 AWG

CON-0022 / SOURCE 2-TNS / CONTROL CABINET

WIRE #	WIRE COLOR	FUNCTION	WIRE AWG
M2T2	WHITE	TRIP COIL +	18 AWG
D2T2	RED	TRIP COIL +	18 AWG
DSS2	GRN/YLW	STATUS SW COMMON	16 AWG
DSS2	ORANGE	STATUS SW OPEN	16 AWG
DSAS2	BLACK	STATUS SW CLOSED	16 AWG
	BLUE		18 AWG

CON-0014 / SOURCE1-CT / CONTROL CABINET

WIRE #	WIRE COLOR	FUNCTION	WIRE AWG
11	BLACK	A PHASE CT	14 AWG
12	WHITE	B PHASE CT	14 AWG
13	RED	C PHASE CT	14 AWG
10	GRN/YLW	ABC CT COMMON	14 AWG

CON-0014 / LOAD1-CT / CONTROL CABINET

WIRE #	WIRE COLOR	FUNCTION	WIRE AWG
21	BLACK	A PHASE CT	14 AWG
22	WHITE	B PHASE CT	14 AWG
23	RED	C PHASE CT	14 AWG
20	GRN/YLW	ABC CT COMMON	14 AWG

CON-0014 / LOAD2-CT / CONTROL CABINET

WIRE #	WIRE COLOR	FUNCTION	WIRE AWG
31	BLACK	A PHASE CT	14 AWG
32	WHITE	B PHASE CT	14 AWG
33	RED	C PHASE CT	14 AWG
30	GRN/YLW	ABC CT COMMON	14 AWG

CON-0014 / LOAD3-CT / CONTROL CABINET

WIRE #	WIRE COLOR	FUNCTION	WIRE AWG
41	BLACK	A PHASE CT	14 AWG
42	WHITE	B PHASE CT	14 AWG
43	RED	C PHASE CT	14 AWG
40	GRN/YLW	ABC CT COMMON	14 AWG

CON-0014 / L4/S3-CT / CONTROL CABINET

WIRE #	WIRE COLOR	FUNCTION	WIRE AWG
51	BLACK	A PHASE CT	14 AWG
52	WHITE	B PHASE CT	14 AWG
53	RED	C PHASE CT	14 AWG
50	GRN/YLW	ABC CT COMMON	14 AWG

CON-0014 / SOURCE2-CT / CONTROL CABINET

WIRE #	WIRE COLOR	FUNCTION	WIRE AWG
61	BLACK	A PHASE CT	14 AWG
62	WHITE	B PHASE CT	14 AWG
63	RED	C PHASE CT	14 AWG
60	GRN/YLW	ABC CT COMMON	14 AWG

CON-0012 / SOURCE1-MTR / CONTROL CABINET

WIRE #	WIRE COLOR	FUNCTION	WIRE AWG
C10	WHT/BLK	CONTROL-OPEN	18 AWG
D10-3	BLACK	24VDC+	14 AWG
M9	WHITE	24VDC-	14 AWG
C1C	RED	CONTROL-CLOSE	18 AWG
D10-4	ORANGE	STATUS-COMMON	18 AWG
S10	BLUE	STATUS-OPEN	18 AWG
S1C	GRN/YLW	STATUS-CLOSED	18 AWG

CON-0012 / LOAD1-MTR / CONTROL CABINET

WIRE #	WIRE COLOR	FUNCTION	WIRE AWG
C20	WHT/BLK	CONTROL-OPEN	18 AWG
D12-3	BLACK	24VDC+	14 AWG
M12	WHITE	24VDC-	14 AWG
C2C	RED	CONTROL-CLOSE	18 AWG
D12-4	ORANGE	STATUS-COMMON	18 AWG
S20	BLUE	STATUS-OPEN	18 AWG
S2C	GRN/YLW	STATUS-CLOSED	18 AWG

CON-0012 / LOAD2-MTR / CONTROL CABINET

WIRE #	WIRE COLOR	FUNCTION	WIRE AWG
C30	WHT/BLK	CONTROL-OPEN	18 AWG
D14-3	BLACK	24VDC+	14 AWG
M15	WHITE	24VDC-	14 AWG
C3C	RED	CONTROL-CLOSE	18 AWG
D14-4	ORANGE	STATUS-COMMON	18 AWG
S30	BLUE	STATUS-OPEN	18 AWG
S3C	GRN/YLW	STATUS-CLOSED	18 AWG

CON-0012 / LOAD3-MTR / CONTROL CABINET

WIRE #	WIRE COLOR	FUNCTION	WIRE AWG
C40	WHT/BLK	CONTROL-OPEN	18 AWG
D16-3	BLACK	24VDC+	14 AWG
M16	WHITE	24VDC-	14 AWG
C4C	RED	CONTROL-CLOSE	18 AWG
D17-4	ORANGE	STATUS-COMMON	18 AWG
S40	BLUE	STATUS-OPEN	18 AWG
S4C	GRN/YLW	STATUS-CLOSED	18 AWG

CON-0012 / L4/S3-MTR / CONTROL CABINET

WIRE #	WIRE COLOR	FUNCTION	WIRE AWG
C50	WHT/BLK	CONTROL-OPEN	18 AWG
D18-3	BLACK	24VDC+	14 AWG
M21	WHITE	24VDC-	14 AWG
C5C	RED	CONTROL-CLOSE	18 AWG
D18-4	ORANGE	STATUS-COMMON	18 AWG
S50	BLUE	STATUS-OPEN	18 AWG
S5C	GRN/YLW	STATUS-CLOSED	18 AWG

CON-0012 / SOURCE2-MTR / CONTROL CABINET

WIRE #	WIRE COLOR	FUNCTION	WIRE AWG
C60	WHT/BLK	CONTROL-OPEN	18 AWG
D20-3	BLACK	24VDC+	14 AWG
M24	WHITE	24VDC-	14 AWG
C6C	RED	CONTROL-CLOSE	18 AWG
D20-4	ORANGE	STATUS-COMMON	18 AWG
S60	BLUE	STATUS-OPEN	18 AWG
S6C	GRN/YLW	STATUS-CLOSED	18 AWG

CON-0011 / PT-1 / CONTROL CABINET

WIRE #	WIRE COLOR	FUNCTION	WIRE AWG
GND-12	GRN/YLW		14 AWG
PX1	BLACK	120VAC H	14 AWG
PX2	WHITE	120VAC N	14 AWG

CON-0011 / PT-2 / CONTROL CABINET

WIRE #	WIRE COLOR	FUNCTION	WIRE AWG
GND-13	GRN/YLW		14 AWG
AX1	BLACK	120VAC H	14 AWG
AX2	WHITE	120VAC N	14 AWG

CON-0021 / AC / CONTROL CABINET

WIRE #	WIRE COLOR	FUNCTION	WIRE AWG
ACH-A	BLACK	A VOLTAGE	14 AWG
ACH-B	WHITE	B VOLTAGE	14 AWG
ACH-C	RED	C VOLTAGE	14 AWG
	GRN/YLW		14 AWG

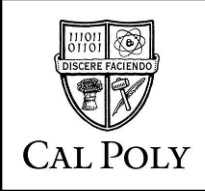
CON-0021 / PT OUT / CONTROL CABINET

WIRE #	WIRE COLOR	FUNCTION	WIRE AWG
PT-A1	BLACK	A VOLTAGE	14 AWG
PT-B1	WHITE	B VOLTAGE	14 AWG
PT-C1	RED	C VOLTAGE	14 AWG
	GRN/YLW		14 AWG

EATON 1765 W. 160th STE 100
Broomfield, CO 80023
Powering Business Worldwide

15 OF 16 PART NUMBER **CA-20173-SCH** REV 1-01

STANDARD CURRENT AS OF: 01/01/2025
APPROVED BY: FMD
NOTES:



PROTECTION CABINET
D10-15

CONNECTOR SCHEDULE- SWITCH TANK

CON-0024 / SOURCE1-TNS / SWITCH TANK				
PN	WIRE #	WIRE COLOR	FUNCTION	WIRE AWG
⊖	M1T2	WHITE	TRIP COIL -	16 AWG
⊖	D1T2	RED	TRIP COIL +	16 AWG
⊖	DSS1	GRN/YLW	STATUS SW COMMON	16 AWG
⊖	DSB1	ORANGE	STATUS SW OPEN	16 AWG
⊖	DSAS1	BLACK	STATUS SW CLOSED	16 AWG
⊖		BLUE		16 AWG

CON-0023 / SOURCE1-CT / SWITCH TANK				
PN	WIRE #	WIRE COLOR	FUNCTION	WIRE AWG
⊖	11	BLACK	A PHASE CT	14 AWG
⊖	12	WHITE	B PHASE CT	14 AWG
⊖	13	RED	C PHASE CT	14 AWG
⊖	10	GRN/YLW	ABC CT COMMON	14 AWG

CON-0024 / LOAD1-TNS / SWITCH TANK				
PN	WIRE #	WIRE COLOR	FUNCTION	WIRE AWG
⊖	M2T2	WHITE	TRIP COIL -	16 AWG
⊖	D2T2	RED	TRIP COIL +	16 AWG
⊖	DSL1	GRN/YLW	STATUS SW COMMON	16 AWG
⊖	DSB1	ORANGE	STATUS SW OPEN	16 AWG
⊖	DSAL1	BLACK	STATUS SW CLOSED	16 AWG
⊖		BLUE		16 AWG

CON-0023 / LOAD1-CT / SWITCH TANK				
PN	WIRE #	WIRE COLOR	FUNCTION	WIRE AWG
⊖	21	BLACK	A PHASE CT	14 AWG
⊖	22	WHITE	B PHASE CT	14 AWG
⊖	23	RED	C PHASE CT	14 AWG
⊖	20	GRN/YLW	ABC CT COMMON	14 AWG

CAB-00_ / PT-1 / CABLE				
PN	WIRE #	WIRE COLOR	FUNCTION	WIRE AWG
⊖	GND-11	GRN/YLW		14 AWG
⊖	PXH	BLACK	120VAC H	14 AWG
⊖	PXN	WHITE	120VAC N	14 AWG

CON-0024 / LOAD2-TNS / SWITCH TANK				
PN	WIRE #	WIRE COLOR	FUNCTION	WIRE AWG
⊖	M3T2	WHITE	TRIP COIL -	16 AWG
⊖	D3T2	RED	TRIP COIL +	16 AWG
⊖	DSL2	GRN/YLW	STATUS SW COMMON	16 AWG
⊖	DSB2	ORANGE	STATUS SW OPEN	16 AWG
⊖	DSAL2	BLACK	STATUS SW CLOSED	16 AWG
⊖		BLUE		16 AWG

CON-0023 / LOAD2-CT / SWITCH TANK				
PN	WIRE #	WIRE COLOR	FUNCTION	WIRE AWG
⊖	31	BLACK	A PHASE CT	14 AWG
⊖	32	WHITE	B PHASE CT	14 AWG
⊖	33	RED	C PHASE CT	14 AWG
⊖	30	GRN/YLW	ABC CT COMMON	14 AWG

CAB-00_ / PT-2 / CABLE				
PN	WIRE #	WIRE COLOR	FUNCTION	WIRE AWG
⊖	GND-12	GRN/YLW		14 AWG
⊖	AXH	BLACK	120VAC H	14 AWG
⊖	AXN	WHITE	120VAC N	14 AWG

CON-0024 / LOAD3-TNS / SWITCH TANK				
PN	WIRE #	WIRE COLOR	FUNCTION	WIRE AWG
⊖	M4T2	WHITE	TRIP COIL -	16 AWG
⊖	D4T2	RED	TRIP COIL +	16 AWG
⊖	DSL3	GRN/YLW	STATUS SW COMMON	16 AWG
⊖	DSB3	ORANGE	STATUS SW OPEN	16 AWG
⊖	DSAL3	BLACK	STATUS SW CLOSED	16 AWG
⊖		BLUE		16 AWG


CON-0023 / LOAD3-CT / SWITCH TANK				
PN	WIRE #	WIRE COLOR	FUNCTION	WIRE AWG
⊖	41	BLACK	A PHASE CT	14 AWG
⊖	42	WHITE	B PHASE CT	14 AWG
⊖	43	RED	C PHASE CT	14 AWG
⊖	40	GRN/YLW	ABC CT COMMON	14 AWG

CON-0024 / L4S3-TNS / SWITCH TANK				
PN	WIRE #	WIRE COLOR	FUNCTION	WIRE AWG
⊖	M6T2	WHITE	TRIP COIL -	16 AWG
⊖	D6T2	RED	TRIP COIL +	16 AWG
⊖	DSL4(S)	GRN/YLW	STATUS SW COMMON	16 AWG
⊖	DSB4(S)	ORANGE	STATUS SW OPEN	16 AWG
⊖	DSAL4(S)	BLACK	STATUS SW CLOSED	16 AWG
⊖		BLUE		16 AWG

CON-0023 / L4S3-CT / SWITCH TANK				
PN	WIRE #	WIRE COLOR	FUNCTION	WIRE AWG
⊖	51	BLACK	A PHASE CT	14 AWG
⊖	52	WHITE	B PHASE CT	14 AWG
⊖	53	RED	C PHASE CT	14 AWG
⊖	50	GRN/YLW	ABC CT COMMON	14 AWG

CON-0022 / SOURCE 2-TNS / CONTROL CABINET				
PN	WIRE #	WIRE COLOR	FUNCTION	WIRE AWG
⊖	M6T2	WHITE	TRIP COIL -	16 AWG
⊖	D6T2	RED	TRIP COIL +	16 AWG
⊖	DSS2	GRN/YLW	STATUS SW COMMON	16 AWG
⊖	DSB2	ORANGE	STATUS SW OPEN	16 AWG
⊖	DSAS2	BLACK	STATUS SW CLOSED	16 AWG
⊖		BLUE		16 AWG

CON-0014 / SOURCE2-CT / CONTROL CABINET				
PN	WIRE #	WIRE COLOR	FUNCTION	WIRE AWG
⊖	61	BLACK	A PHASE CT	14 AWG
⊖	62	WHITE	B PHASE CT	14 AWG
⊖	63	RED	C PHASE CT	14 AWG
⊖	60	GRN/YLW	ABC CT COMMON	14 AWG



1765 W. 160th STE 100
Broomfield, CO 80023

16 OF 16

FRONT NUMBER

CA-20173-SCH

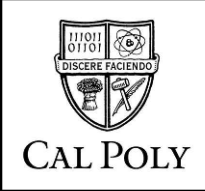
REV

1-01

STANDARD CURRENT AS OF: 01/01/2025

APPROVED BY: FMD

NOTES:



PROTECTION CABINET

D10-16