

6 5 4 3 2 1

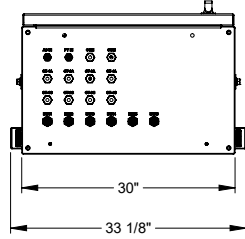
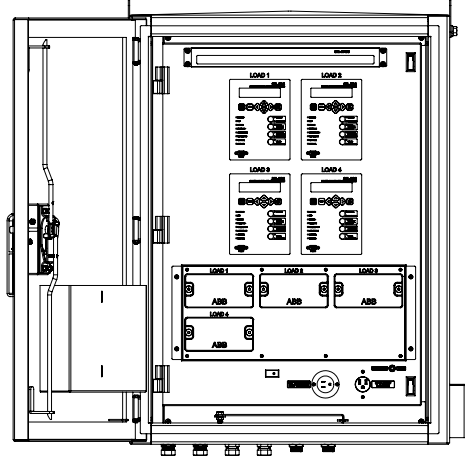
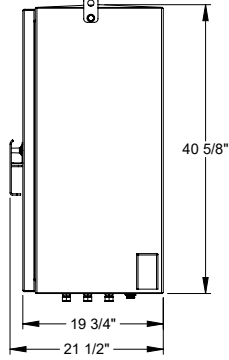
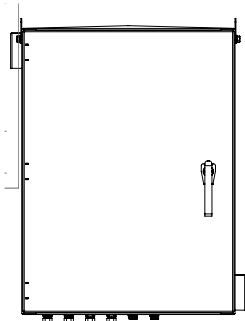
REVISIONS			
REV.	DESCRIPTION	INITIALS	DATE

D D

C C

B B

A A



CUSTOMER APPROVAL – Engineer of Record

PRINT NAME: _____

SIGNATURE: _____

COMPANY: _____

DATE: _____

Metering Cabinet for use with Eaton-ISG catalog # P5606066666-102A-A01-P2

Project – Cal Poly SLO

 Powering Business Worldwide	1765 W. 160th STE 100 Broomfield, CO 80023	
	PART NUMBER CA-20175-SCH	REV 1-01

DESIGNED BY K YANG	DATE 20 AUG 2024	SCHEMATIC, CONTROL CABINET, METERING, (4) 735, (4) FT-1
DRAWN BY K YANG	DATE 20 AUG 2024	

1 OF 9

STANDARD CURRENT AS OF: 01/01/2025

APPROVED BY: FMD

NOTES:

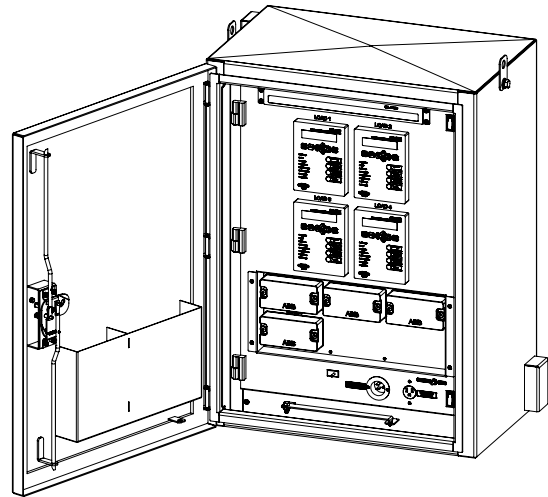


CAL POLY

METER CABINET

D9-1

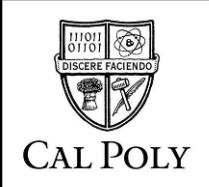
ITEM NO.	PART NUMBER	DESCRIPTION	QTY.
1	PP-11362	ETHERNET SWITCH, SEL 2740S, 2740S#N8QT	1
2	PP-11218	POWER QUALITY AND REVENUE METER, SEL-735, MOT# 0735BX00521CXXXXX26202XX, KEY CODE 2203, 24 VDC, FORM 5	4
3	PP-10349	TB, FUSE HOLDER, WEIDMULLER WSI #1011000000	13
4	PP-10347	TB, END CLAMP, WEIDMULLER WEW 35/2 END ANCHOR #1061200000	10
5	PP-10350	TB, TERMINAL BLOCK, WEIDMULLER WDU4 ##1020100000	29
6	PP-10391	BAR, GROUNDING, 14 POSITION, EATON# GBK1420 OR EQUIV	1
7	PP-10319	CONTROL CABINET HEATER, STEGO 14001.0-00, 30 WATT 120-240 VAC	1
8	PP-10247	FLANGED INLET, 15 AMP, 120 AC, HUBBELL# HBL5278C	1
9	PP-10311	SWITCH, TOGGLE, DPDT, HONEYWELL #2NT1-3	1
10	CON-0014	CONNECTOR, 4 PIN, MALE, 14 GA, MENCOR #MINH-4MR-2M-SS	2
11	CON-0068	COUPLER BULKHEAD, ETHERNET RJ45 FEED THROUGH, WITH CAP, L-COM# WBRJC6A-FF OR EQUIV	6
12	PP-10382	CORD GRIP, 304 S/S, 1/2 NPT THREAD, CABLE SIZE .375 TO .438" REMKE# RSSS-107	10
13	PP-10325	SOCKET, RELAY, TRACK MOUNT, 27E893, TE ELECTRONICS--C-2-1419106-5-D-3D	1
14	PP-10328	THERMOSTAT, STEGO KT 011 SERIES# 01140.9-00	1
15	PP-11023	POWER SUPPLY, 120AC/24VDC, 20 AMP OUTPUT, NEWMAR# DIN-UPS 24-20	1
16	PP-11363	SEL 3530-4, 24-48 VDC, (2) 10/100BASE-T, IEC 61850, CC, 3530#K2FD	1
17	PP-10305	BATTERY-28AH-12VDC, POWER SONIC-PS-12280	2
18	PP-11105	FT-1 SHORTING SWITCHES, 4 POTENTIAL, 6 CURRENT, ALL BLACK HANDLES, STYLE #C670B197G18, CODE# 119	4
19	PP-11158	SPARE FUSE HOLDER, WEIDMULLER #7914760001	1
20	CAB-0107	CABLE, 3 FEET, ETHERNET, IS5 #9100-0000-000, Cat5-03BLI: 3 FT RJ45	1
21	CAB-0061	CABLE, 10 FEET, ETHERNET, MOT#CA605CBX010, KEY CODE 3834	10
22	PP-11365	FIBER PATCH PANEL, SINGLEMODE, HIRSCHMANN# MIPP-AD-1L9P	1
23	PP-11364	FIBER PATCH PANEL, MULTIMODE, HIRSCHMANN# MIPP-AD-1L1P	2
24	CAB-0075	CABLE, SERIAL, IRIG, 10' LONG, DB9, SEL, MOT#C273A-010, KEY 2291	4
25	PP-10324	RELAY, DPDT, 15 AMP, 120, TE ELECTRONICS, #KUMP-11A18-120	1



EATON
Powering Business Worldwide
1765 W. 160th STE 100
Broomfield, CO 80023

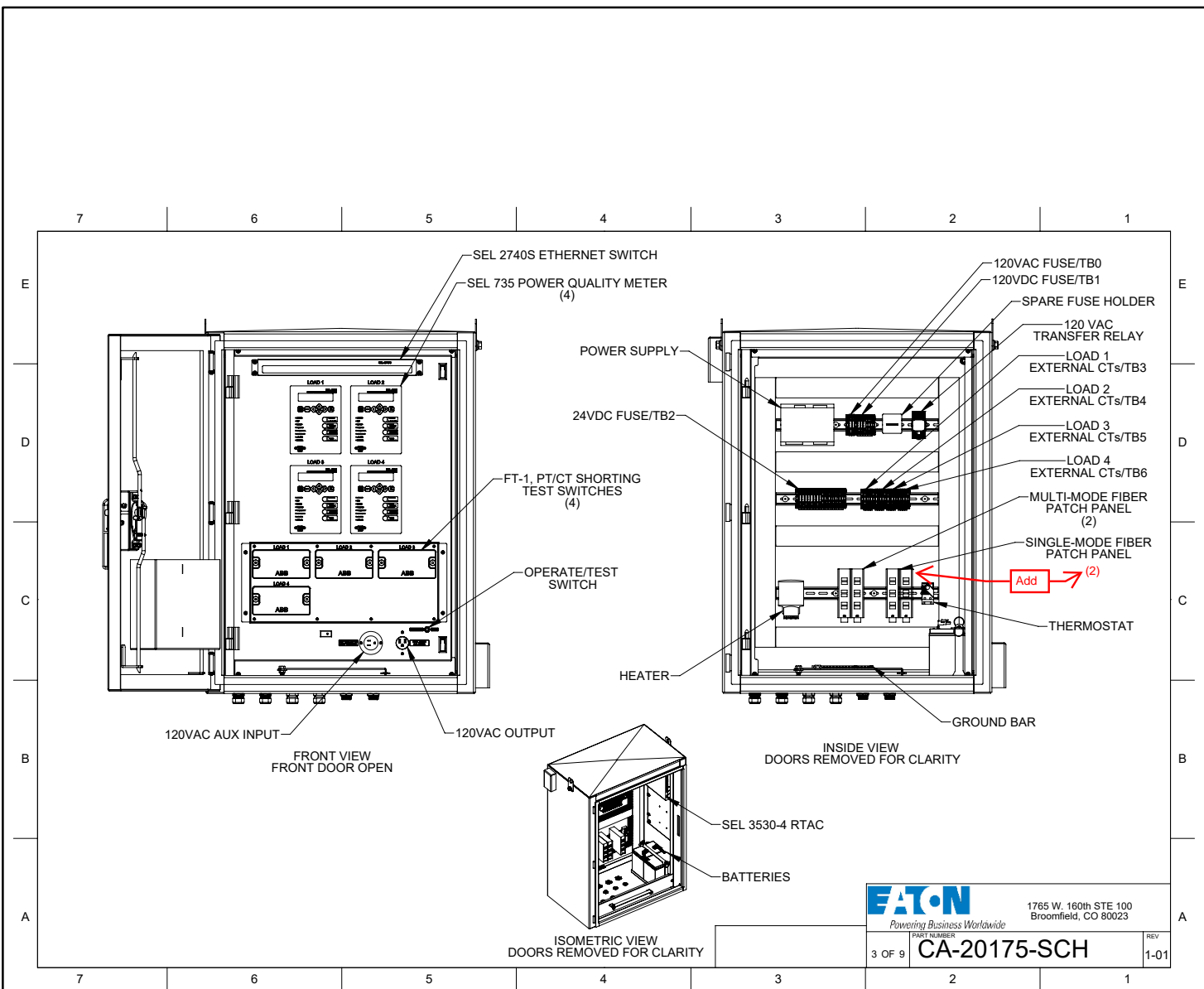
2 OF 9 PART NUMBER **CA-20175-SCH** REV 1-01

STANDARD CURRENT AS OF:	01/01/2025
APPROVED BY:	FMD
NOTES:	



METER CABINET

D9-2

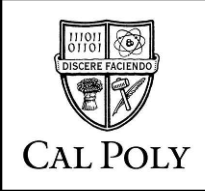


EATON Powering Business Worldwide		1765 W. 160th STE 100 Broomfield, CO 80023
3 OF 9	PART NUMBER CA-20175-SCH	REV 1-01

STANDARD CURRENT AS OF: 01/01/2025

APPROVED BY: FMD

NOTES:



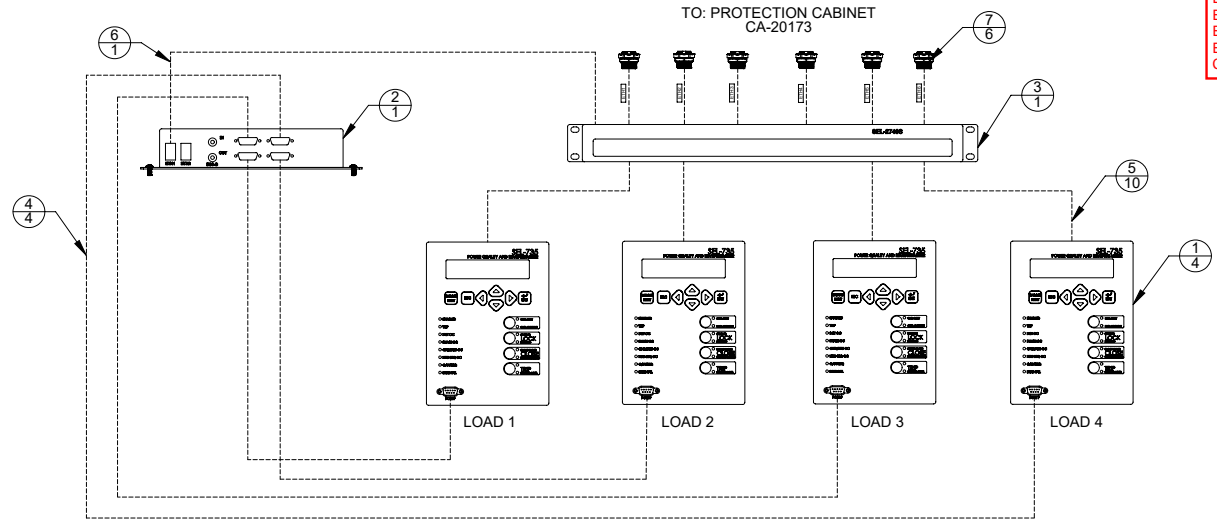
METER CABINET

D9-3

ITEM NO.	PART NUMBER	DESCRIPTION	QTY.
1	PP-11218	POWER QUALITY AND REVENUE METER, SEL-735, MOT# 0735BX00521CXXXXXX26202XX, KEY CODE 2203, 24 VDC, FORM 5	4
2	PP-11363	SEL 3530-4, 24-48 VDC, (2) 10/100BASE-T, IEC 61850, CC, 3530#K2FD	1
3	PP-11362	ETHERNET SWITCH, SEL 2740S, 2740S#N8QT	1
4	CAB-0075	CABLE, SERIAL, TRIG, 10' LONG, DB9, SEL, MOT#C273A-010, KEY 2291	4
5	CAB-0061	CABLE, 10 FEET, ETHERNET, MOT#CA605CBX010, KEY CODE 3834	10
6	CAB-0107	CABLE, 3 FEET, ETHERNET, ISS #9100-0000-000, Cat5-03B/LI, 3 FT RJ45	1
7	CON-0068	COUPLER BULKHEAD, ETHERNET RJ45 FEED THROUGH, WITH CAP, L-COM# VBRJ6A-FF OR EQUIV	6

SEL CABLE SCHEDULE			
DEVICE - PORT	CABLE	WIRE LABEL	DEVICE - PORT
L1 SEL 735 - PORT 1	CAB-0061	ETH 7	SEL 2740S - PORT 7
L2 SEL 735 - PORT 1	CAB-0061	ETH 8	SEL 2740S - PORT 8
L3 SEL 735 - PORT 1	CAB-0061	ETH9	SEL 2740S - PORT 9
L4 SEL 735 - PORT 1	CAB-0061	ETH10	SEL 2740S - PORT 10
SEL RTAC - ETH1	CAB-0107	ETH11	SEL 2740S - PORT 11
L1 SEL 735 - PORT 3	CAB-0075	MB1	RTAC - COM 1
L2 SEL 735 - PORT 3	CAB-0075	MB2	RTAC - COM 2
L3 SEL 735 - PORT 3	CAB-0075	MB3	RTAC - COM 3
L4 SEL 735 - PORT 3	CAB-0075	MB4	RTAC - COM 4

- E-1
- E-2
- E-3
- E-4
- C-4



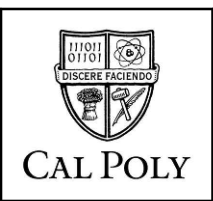
Eaton
Powering Business Worldwide
1765 W. 160th STE 100
Broomfield, CO 80023

PART NUMBER
4 OF 9 **CA-20175-SCH** REV 1-01

STANDARD CURRENT AS OF: 01/01/2025

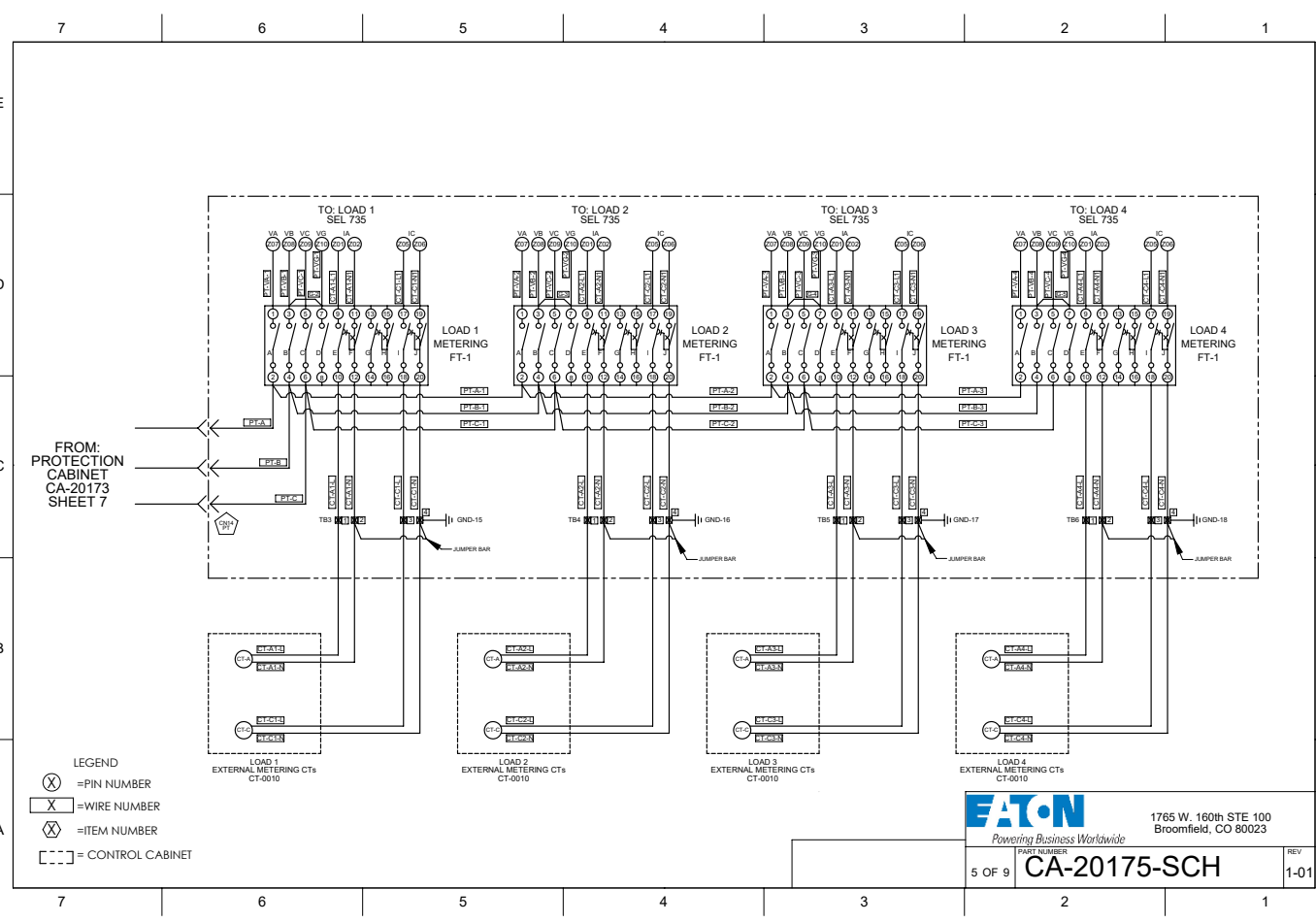
APPROVED BY: FMD

NOTES:



METER CABINET

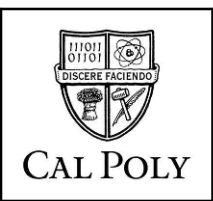
D9-4



STANDARD CURRENT AS OF: 01/01/2025

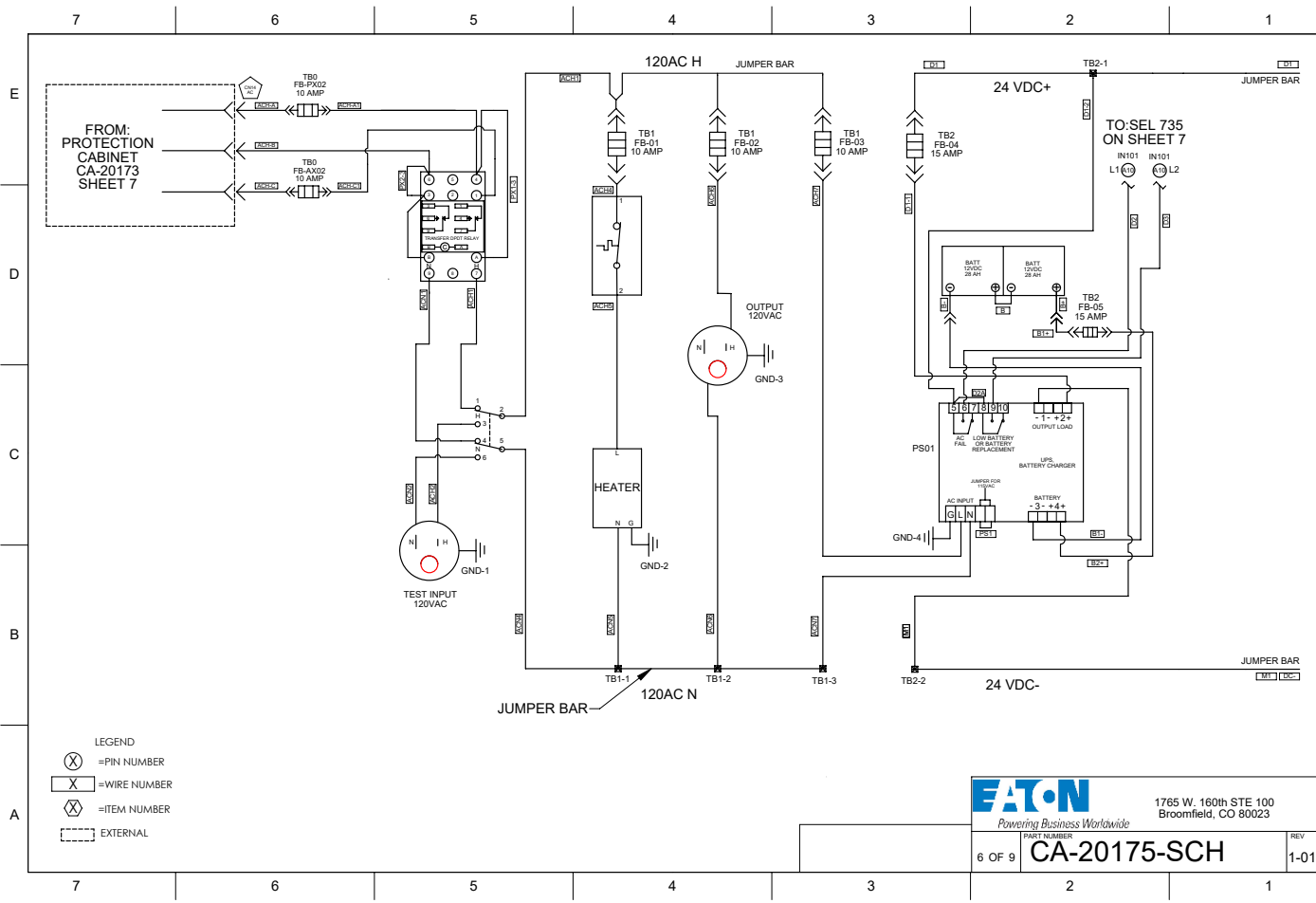
APPROVED BY: FMD

NOTES:



METER CABINET

D9-5



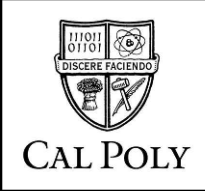
EATON
 Powering Business Worldwide
 1765 W. 160th STE 100
 Broomfield, CO 80023

6 OF 9 PART NUMBER CA-20175-SCH REV 1-01

STANDARD CURRENT AS OF: 01/01/2025

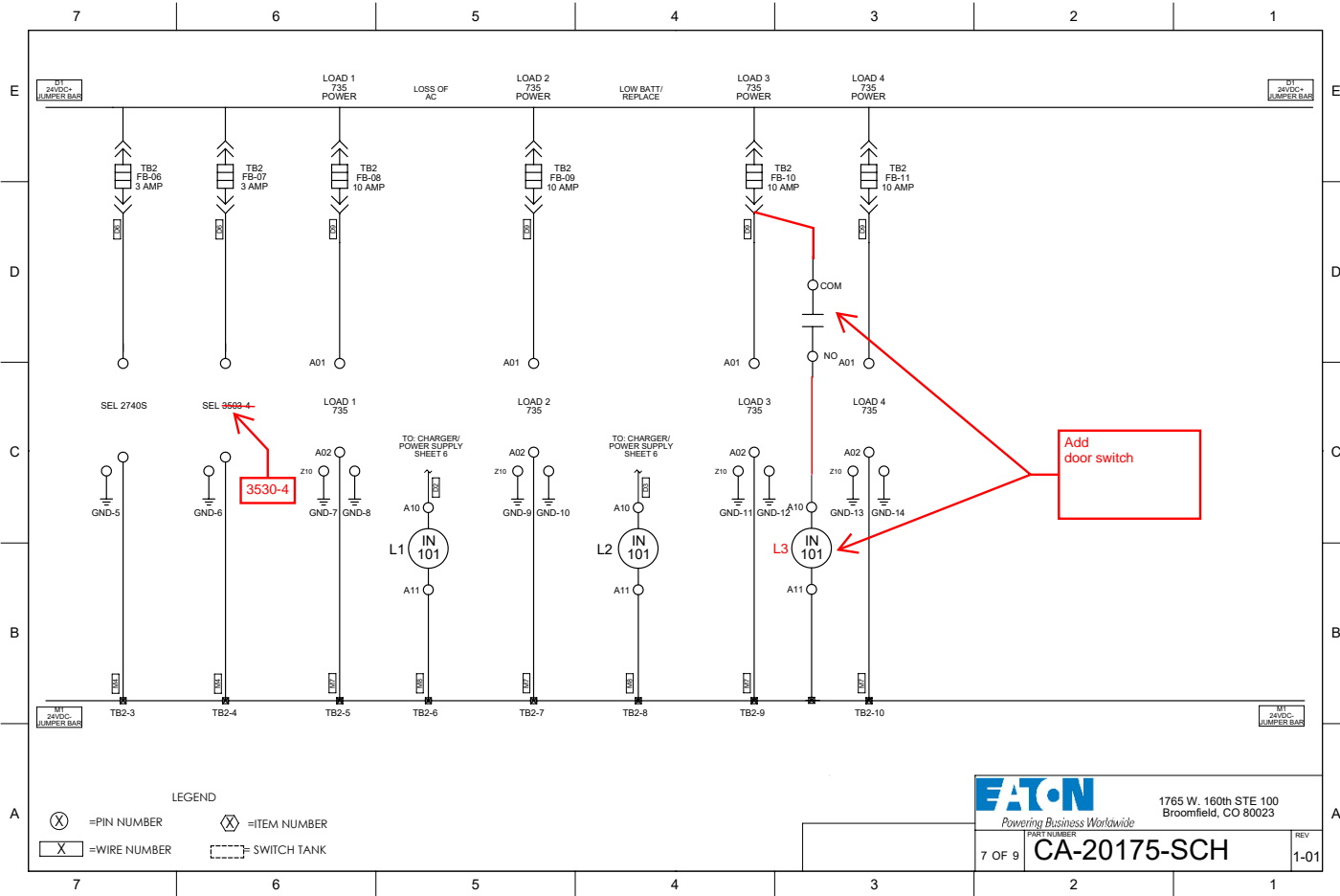
APPROVED BY: FMD

NOTES:

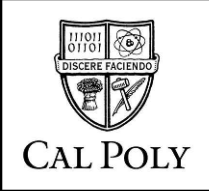


METER CABINET

D9-6



STANDARD CURRENT AS OF:	01/01/2025
APPROVED BY:	FMD
NOTES:	



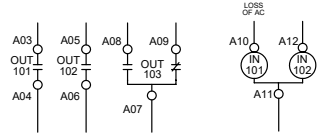
METER CABINET

D9-7

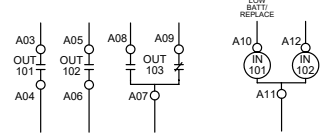
7 6 5 4 3 2 1

E E

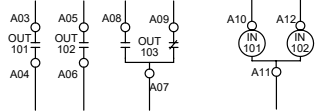
SEL 735 INPUT AND OUTPUT LIST
LOAD 1



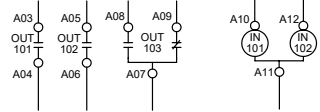
SEL 735 INPUT AND OUTPUT LIST
LOAD 2



SEL 735 INPUT AND OUTPUT LIST
LOAD 3



SEL 735 INPUT AND OUTPUT LIST
LOAD 4



C C

B B

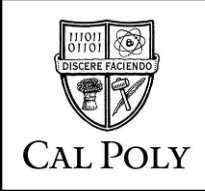
A A

	1765 W. 160th STE 100 Broomfield, CO 80023
	Powering Business Worldwide
8 OF 9	CA-20175-SCH
	REV 1-01

STANDARD CURRENT AS OF: 01/01/2025

APPROVED BY: FMD

NOTES:



METER CABINET

D9-8


CONNECTOR SCHEDULE- METERING CABINET

PT

CCN-0014 / PT / CONTROL CABINET				
PIN	WIRE #	WIRE COLOR	FUNCTION	WIRE AWG
○	PT.A	BLACK	A PHASE	14 AWG
○	PT.B	WHITE	B PHASE	14 AWG
○	PT.C	RED	C PHASE	14 AWG
○		GRN/YLW		14 AWG

AC

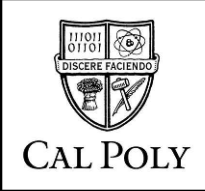
CCN-0014 / AC / CONTROL CABINET				
PIN	WIRE #	WIRE COLOR	FUNCTION	WIRE AWG
○	ACH.A	BLACK	A PHASE	14 AWG
○	ACH.B	WHITE	B PHASE	14 AWG
○	ACH.C	RED	C PHASE	14 AWG
○		GRN/YLW		14 AWG

	1765 W. 160th STE 100 Broomfield, CO 80023
Powering Business Worldwide	
PART NUMBER	REV
9 OF 9	1-01
CA-20175-SCH	

STANDARD CURRENT AS OF: 01/01/2025

APPROVED BY: FMD

NOTES:



METER CABINET

D9-9